



ViewScapes
aluminum windows and doors



ALUMINUM WINDOWS AND DOORS

TO BE OPENED UP TO NEW HORIZONS

ViewScapes is an Italian brand, that develops and manufactures aluminum windows and doors for specific requests and projects, producing unique handcrafted made in Italy products, that are designed to blend with the architectural style of your environment. Since 1971 our vision is to mix the best quality of artisanal craftsmanship with required innovation.

Production methods are developed and optimized in order to guarantee quality and perfection in our windows and doors.

We ensure quality, and warranty it with our professional and experienced technical and production departments.



WHY ALUMINUM

Nowadays, aluminum window and door systems offer a slim, streamlined aesthetic that makes them an ideal fit for contemporary designs. If you would like to upgrade the levels of security, insulation or aesthetics in your building or home, then aluminum is the right choice.

Why choose ViewScapes aluminum windows and doors?

Comfort, security, design, energy efficiency are only some of the main benefits of our durable and sustainable systems.

1. Slim frames and maximized glass

Due to the strength of aluminum, less material is required in the frame to hold the glass. As a result, narrower frame profiles are possible for designs that have sleeker, slimmer lines for a more streamlined overall aesthetic.

Aluminum strength also allows the creation of much bigger windows and doors, which maximizes the glass area to open up the best possible outdoor view, blurring the lines between indoor and outdoor spaces.

2. Robust, durable and easy to maintain

Aluminum is well known for its robust and stable properties, especially when exposed to weather and temperature changes. It has minimal expansion and contraction properties. Furthermore, it is virtually maintenance free, only requiring regular cleaning to keep it looking as good as new.

3. Large and long-lasting color choice

Aluminum framed windows can be powder-coated or anodized in thousands of colors. The only limitation in color is your imagination; you can even choose to have a different color inside and outside.

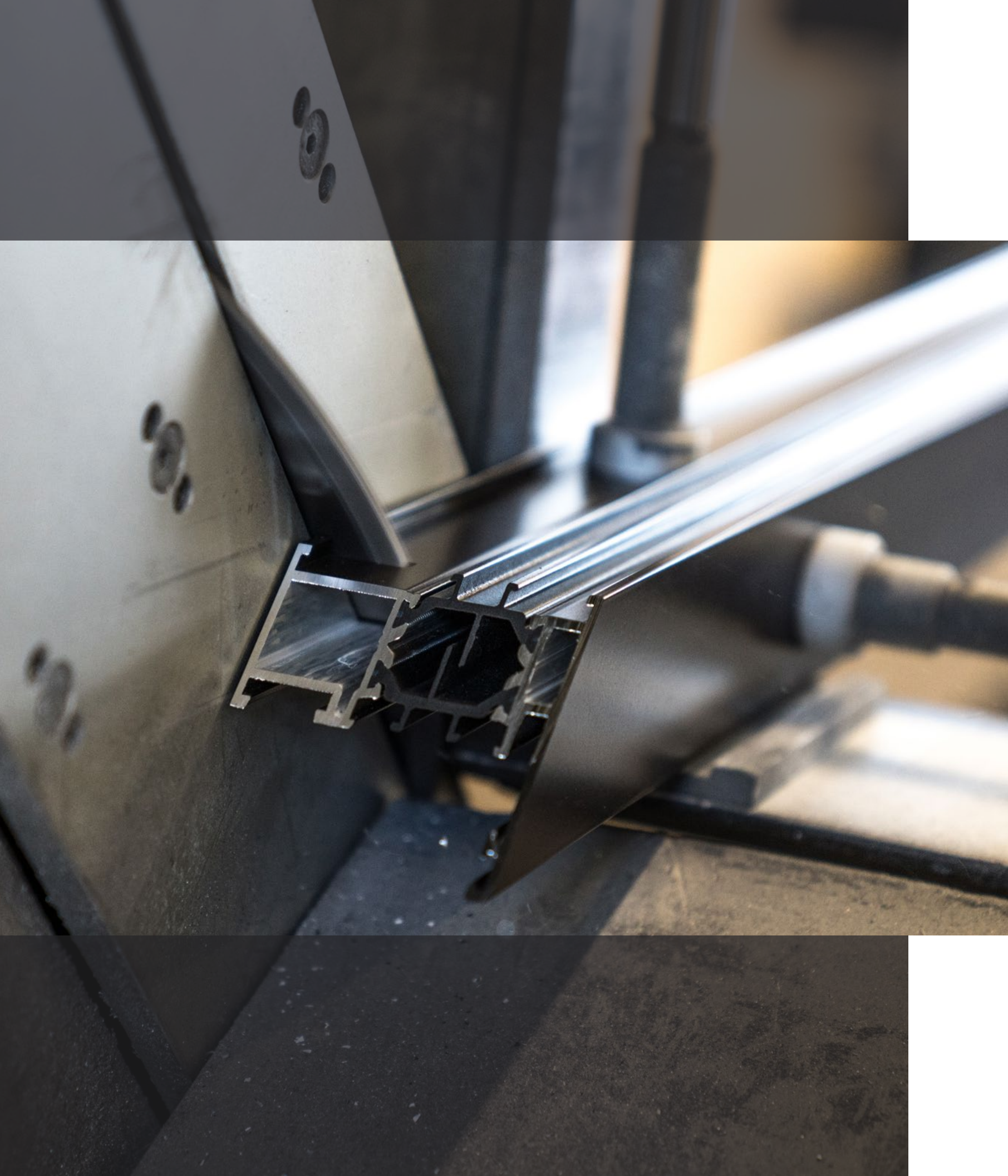
Any high-end range of aluminum windows and doors will have a sleek powder coat finish, which means they never need to be painted as the finish offers excellent longevity.

4. Energy efficiency and recyclability

The developments in window design and thermal break technology offer high levels of wind, water and air-tightness, thereby increasing in-house energy efficiency and performance, resulting in warmer, less drafty homes with lower energy bills.

Aluminum is also recyclable without loss of quality, so at the end of their long life your aluminum windows and doors can be recycled and reused.





PRODUCTION

STRUCTURAL PERFECTION AND TECHNOLOGY MEET TO HIGHLIGHT SPECIFIC ARCHITECTURAL PROFILES AND TO ILLUMINATE EVERY ENVIRONMENT

For more than 40 years, our family business has developed an organized and lean team, in order to manufacture the best quality windows and doors for all customers' needs.

Our production methods are founded on artisanal craftsmanship and innovation, combining tradition and contemporary, architecture, and design.

Our production department is constantly connected to our technical office to maximize product perfection and to satisfy any demanding project.





INDEX

ESSENCE ALU

WINDOWS AND DOORS	11
VS50	12
VS65	16
VS76	20
VS STEEL	24

SLIDING SYSTEMS	29
VS60	30
VS80	32
VS120	34
VS170	38
VS VIEW	42
VS BI-FOLD	46

ALUMINUM AND WOOD	51
VS57w	52
VS72w	56
VS115w	60
VS160w	62

CURTAIN WALL	67
VS50FA – FB	68
VS50FG	70

ENTRY DOORS	73
LADDER HANDLES	75

HARDWARE

HANDLES	79
HINGES	81

FINISHES AND PAINTINGS

RAL COLORS	82
WOODEN EFFECT PAINTINGS	84
WOODEN COVERS (for aluminum and wood profiles)	85

ACCESSORIES

SCREENS	87
---------	----



ESSENCE ALU

WINDOWS AND DOORS

ESSENCE ALU

Timeless and with no style limitations, our range of window and door systems can represent the perfect solution for contemporary architecture, historic buildings or different styles of houses.

The possibility of developing square, rounded, and moulded profiles makes every window and door frame conform to heterogeneous aesthetic requirements.

Various options exist for door openings, tilted, book-like, parallel sliding, external hinged, pivoting, and protruding to cover all customer needs.

Depending on the environment and insulation value, one can choose from different systems: cold or thermally insulated profiles.

ESSENCE ALU

VS50 windows and doors

COLD PROFILES

anti-burglary/tampering hardware



Given the absence of thermal break, this is the best solution for cold windows and doors. Indicated for industrial buildings, unheated or cooled environments and indoor and outdoor mixed-use situations.

WINDOWS

- > Maximum product recyclability, profiles are made entirely of aluminum.
- > Fixed frame depth of 50 mm, sash frame depth of 60 mm.
- > Glazing options from 4 mm up to 43 mm glass thickness.
- > Option to mount invisible hardware for better aesthetics.

DOORS

- > Maximum product recyclability, profiles are made entirely of aluminum.
- > Can be used for internal closings, swing doors and automatic doors.
- > Frame depth of 50 mm, door sash frame depth of 50 mm.
- > Glazing options from 4 mm up to 33 mm glass thickness.

SASH AND GLAZING BEAD OPTIONS

Standard



Moulded



TESTS & REFERENCE STANDARDS

Note: all measurements are made using the SI, the values shown can be approximated due to the conversion



AIR PERMEABILITY
CLASS LC PG 80



WATERPROOFING
CLASS LC PG 80



WIND RESISTANCE
CLASS LC PG 35

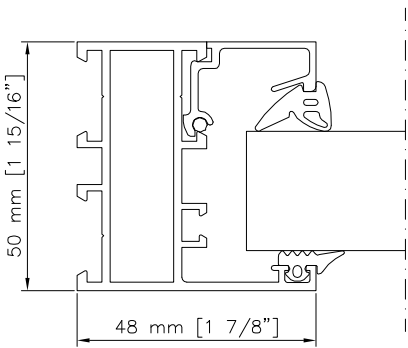


NOISE PERFORMANCE
46 DB

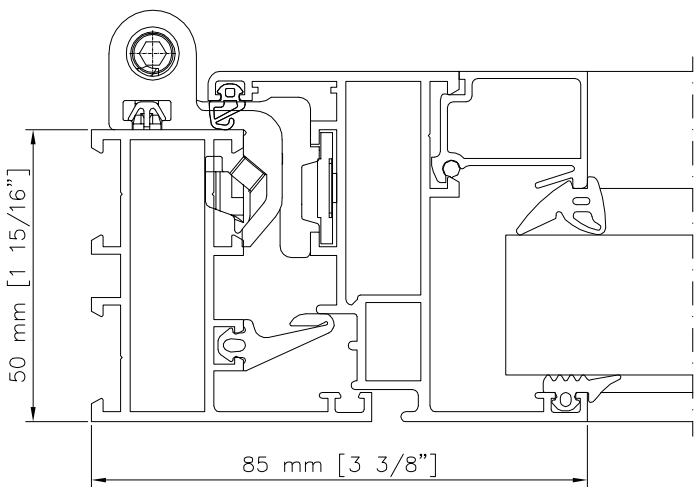
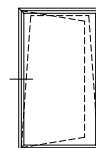


THERMAL TRANSMITTANCE
U=0.408 [BTU/HR FT² ° F]

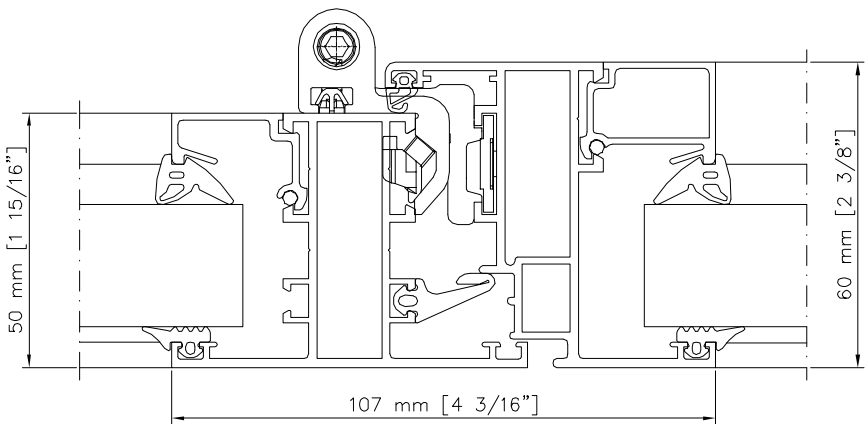
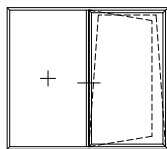
FIXED FRAMES



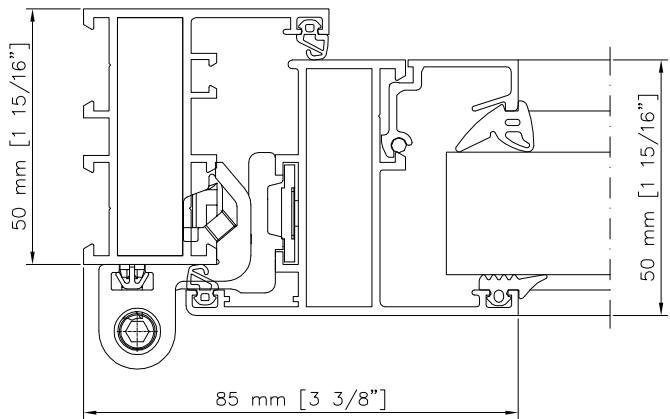
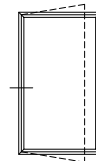
WINDOWS OPEN IN



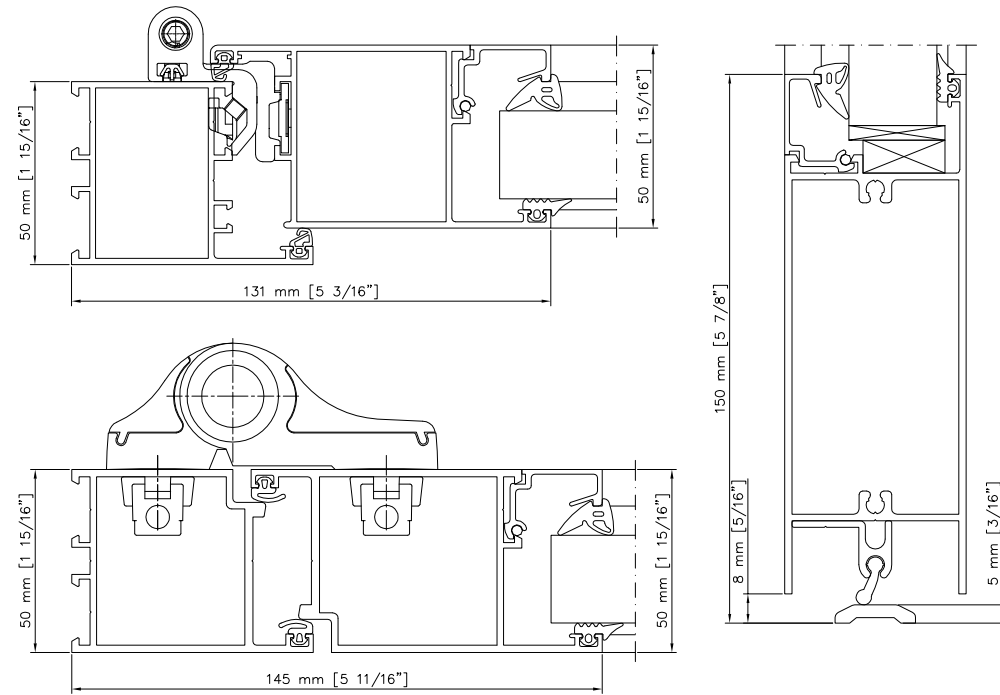
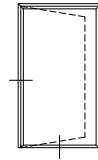
WINDOWS OPEN IN ON FIXED FRAME



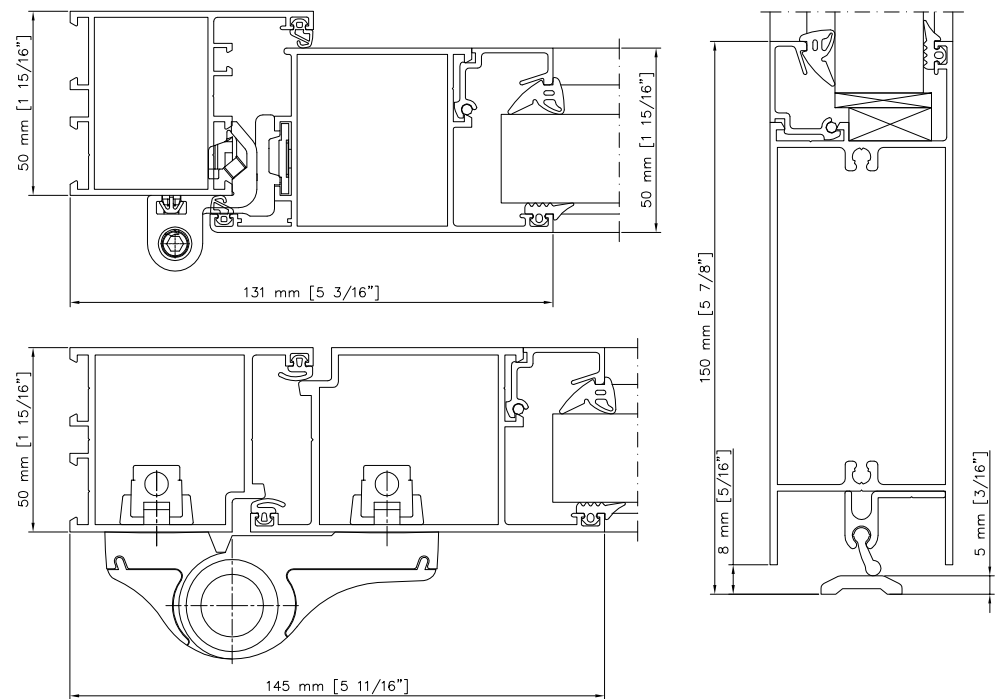
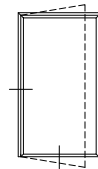
WINDOWS OPEN OUT



DOORS
OPEN IN



DOORS
OPEN OUT



ESSENCE ALU

VS65 windows, doors, hidden line

THERMALLY INSULATED PROFILES



anti-burglary/tampering hardware

Its versatile use makes it one of the best selling systems. This choice benefits many projects, resolving functional and architectural needs.

- WINDOWS

 - > Thermally insulated construction with internal face fitted sash for windows and French windows.
 - > Fixed frame depth of 65 mm, sash frame depth of 75 mm.
 - > Systems with centre gasket and internal rebate gasket.
 - > Glazing options from 6 mm up to 58 mm glass thickness.
 - > Option to mount invisible hardware for better aesthetics.

DOORS

 - > Thermally insulated construction internal and external tilt/slide sash.
 - > Frame depth of 65 mm, door sash frame depth of 65 mm.
 - > Systems with internal and external rebate gaskets.
 - > Glazing options from 6 mm up to 48 mm glass thickness.
 - > Option to mount invisible hardware for better aesthetics.

HIDDEN LINE

 - > Minimal design, ideal for technical demands and contemporary aesthetics.
 - > Maximizing glazed surface and minimizing visible profiles.
 - > Glazing options from 16 mm up to 40 mm glass thickness.
- STANDARD SIZING LIMITS:

Up to L 1200 mm x H 2400 mm on the Casement * (4' x 8') *Wind pressure: 20 psf

Up to L 1500 mm x H 1500 mm on the Awnings * (5' x 5')

Up to L 1800 mm x H 1800 mm on the Hoppers * (6' x 6')

Up to L 1100 mm x H 3000 mm on the Doors * (3'6 x 10')

SASH AND GLAZING BEAD OPTIONS

Standard

Moulded

Rounded

Retrò

TESTS & REFERENCE STANDARDS

Note: all measurements are made using the SI, the values shown can be approximated due to the conversion

- AIR PERMEABILITY

CLASS LC PG 80

WATERPROOFING

CLASS LC PG 80

WIND RESISTANCE

CLASS LC PG 35

NOISE PERFORMANCE

48 DB

THERMAL TRANSMITTANCE

Double Glazing: U=0.312 [BTU/HR FT² °F]

Triple Glazing: U=0.200 [BTU/HR FT² °F]
- FIXED FRAMES

65 mm [2 9/16"]

51 mm [2"]

69 mm [2 11/16"]

80 mm [3 1/8"]

HIDDEN LINE

WINDOWS OPEN IN

65 mm [2 9/16"]

75 mm [2 15/16"]

90 mm [3 9/16"]

69 mm [2 11/16"]

79 mm [3 1/8"]

80 mm [3 1/8"]

HIDDEN LINE

WINDOWS OPEN IN ON FIXED FRAME

65 mm [2 9/16"]

75 mm [2 15/16"]

115 mm [4 1/2"]

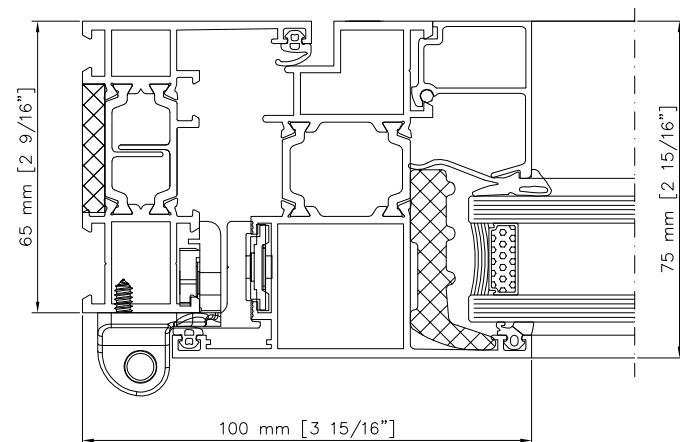
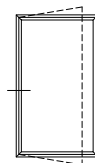
69 mm [2 11/16"]

79 mm [3 1/8"]

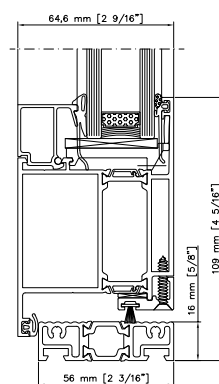
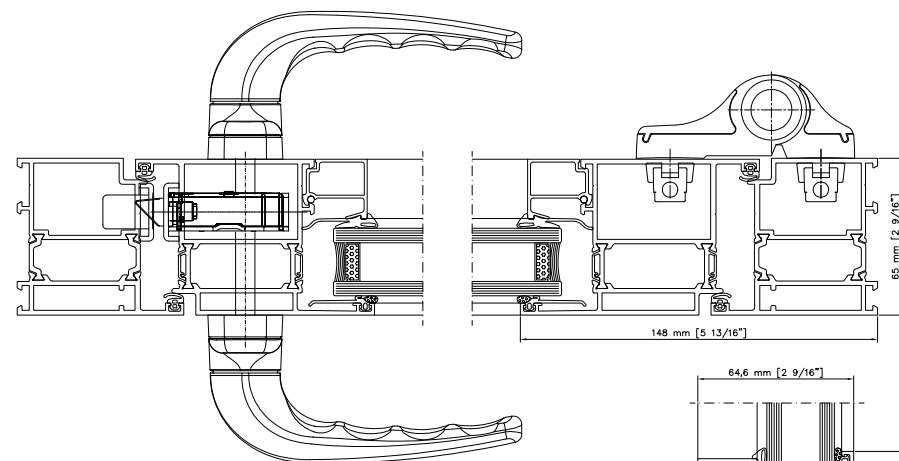
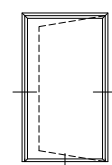
132 mm [5 3/16"]

HIDDEN LINE
- ViewScapes _ Windows and Doors
- 16
- 17
- ViewScapes _ Windows and Doors
- Thermally Insulated Profiles - ESSENCE ALU - VS65

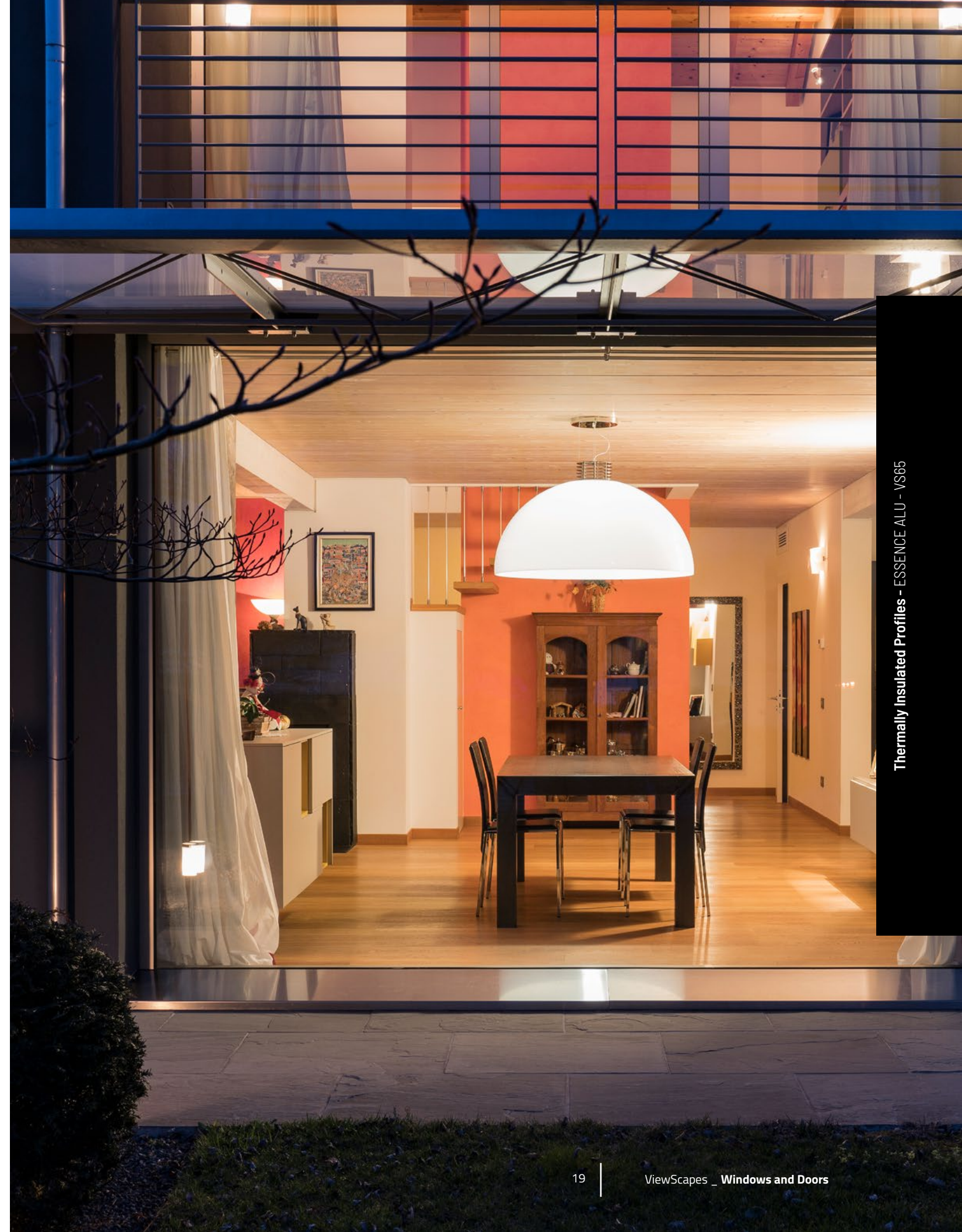
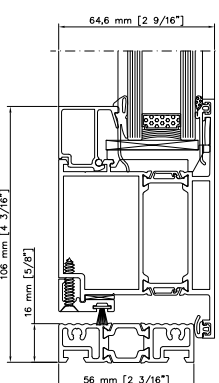
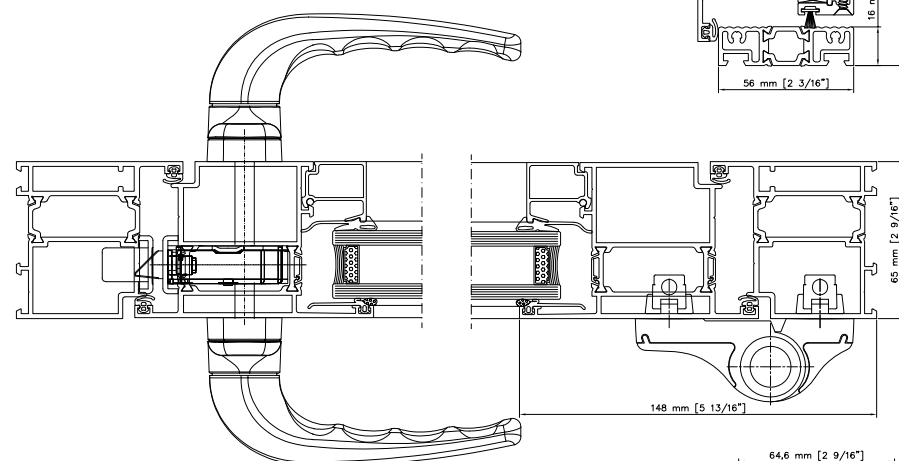
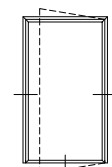
WINDOWS
OPEN OUT



DOORS
OPEN IN



DOORS
OPEN OUT



ESSENCE ALU

VS76 windows and doors

THERMALLY
INSULATED PROFILES

anti-burglary/tampering
hardware



First-rate excellent series that pushes thermal values beyond the standards and achieves great results in applications. Ideal for those looking for Passivhaus certification, together with technological advances that maximize the efficiency and comfort.

WINDOWS

- > Thermally insulated construction with internal face fitted sash for windows and French windows.
- > Fixed frame depth of 76 mm, sash frame depth of 86mm.
- > Systems with centre gasket and internal rebate gasket.
- > Glazing options from 15 mm up to 69 mm glass thickness.
- > Option to mount invisible hardware for better aesthetics.

DOORS

- > Thermally insulated construction internal and external tilt/slide sash for rebated doors.
- > Frame depth of 76 mm, door sash frame depth of 76 mm.
- > Systems with internal and external rebate gaskets.
- > Glazing options from 15 mm up to 59 mm glass thickness.
- > Option to mount invisible hardware for better aesthetics.

SASH AND GLAZING BEAD OPTIONS

Standard



Moulded



Rounded



TESTS & REFERENCE STANDARDS

Note: all measurements are made using the SI, the values shown can be approximated due to the conversion



AIR PERMEABILITY
CLASS LC PG 80



WATERPROOFING
CLASS LC PG 80



WIND RESISTANCE
CLASS LC PG 35

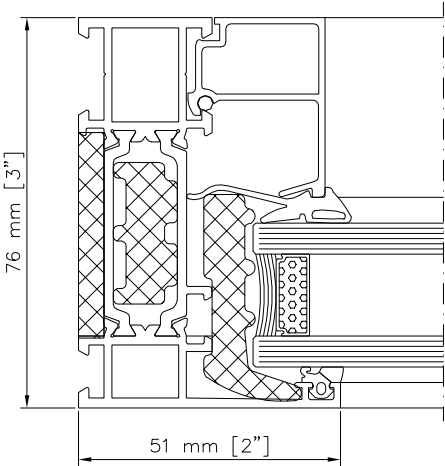
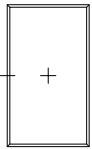


NOISE PERFORMANCE
48 DB

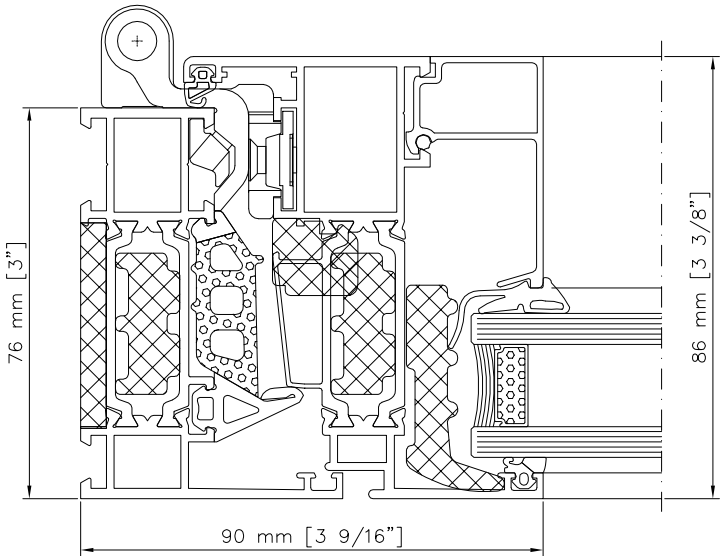


THERMAL TRANSMITTANCE
Double Glazing: U=0.303 [BTU/HR FT² °F]
Triple Glazing: U=0.194 [BTU/HR FT² °F]

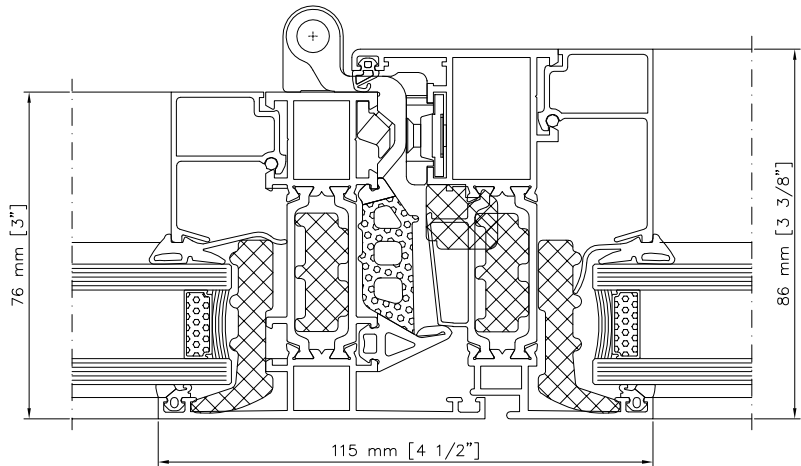
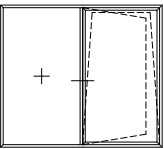
FIXED FRAMES



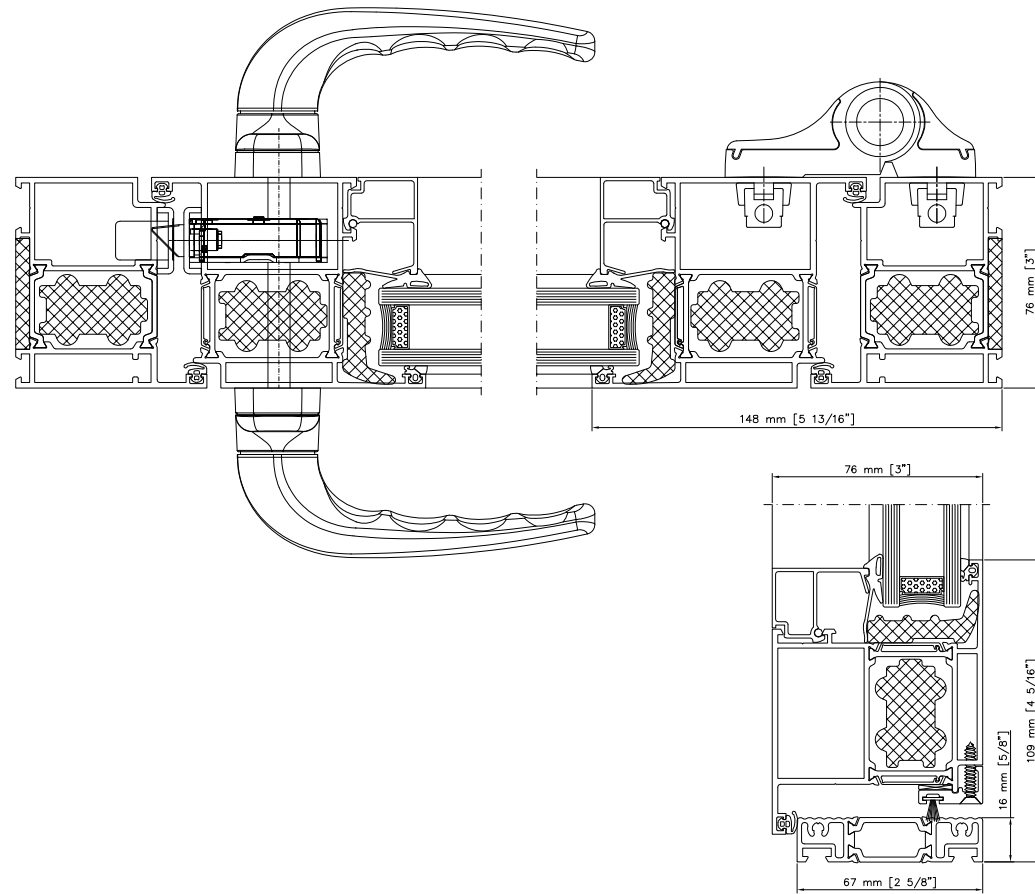
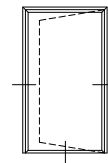
WINDOWS OPEN IN



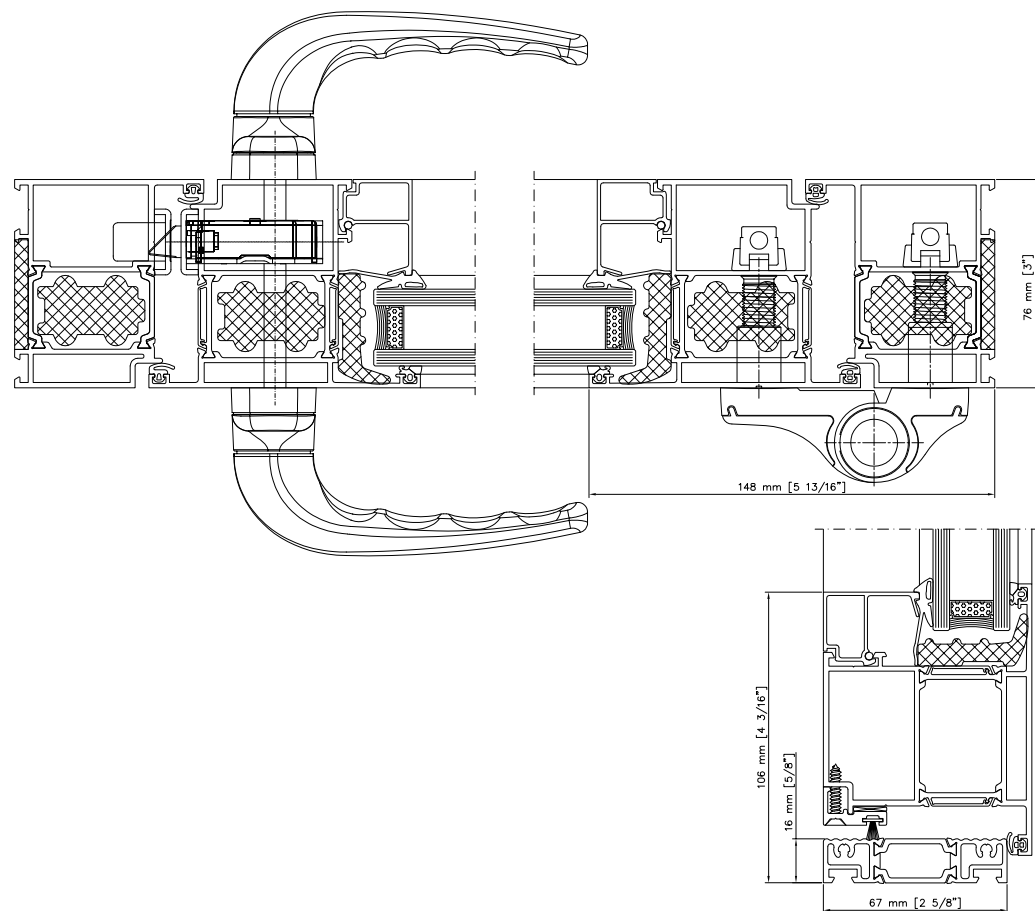
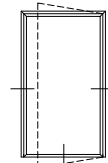
WINDOWS OPEN IN ON FIXED FRAME



DOORS
OPEN IN



DOORS
OPEN OUT



ESSENCE ALU VS STEEL



NOT AVAILABLE
SYSTEM IN DEVELOPMENT FOR 2019

THERMALLY
INSULATED PROFILES



The slim profile and the reduced dimensions of the visible aluminum give to the "steel" series a modern look and maximize the glass surface. This profile allows different kinds of openings to meet every architectural and aesthetics requests.

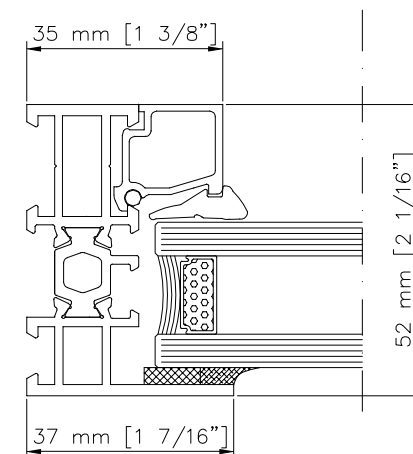
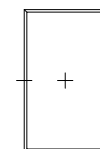
WINDOWS

- > Thermally insulated profile.
- > System with centre gasket and internal rebate gasket.
- > Very slim frame and sash depth.
- > Double or triple glazing option.
- > Option for open out windows.
- > Option to mount invisible hardware for better aesthetics.

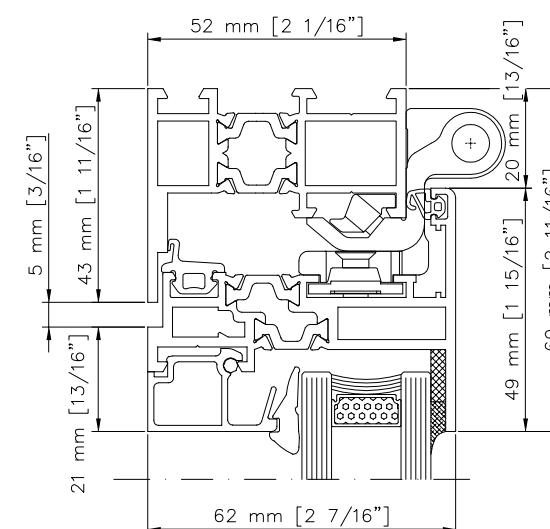
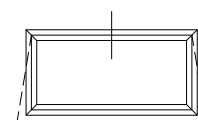


WORK IN PROGRESS
System in development for 2019

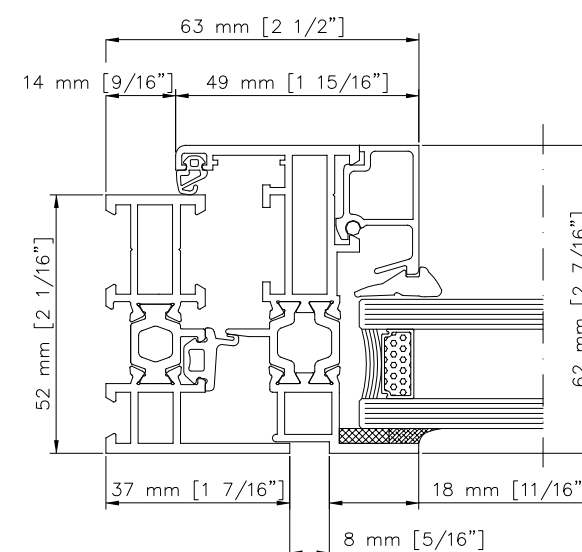
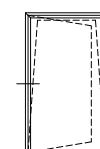
FIXED FRAMES



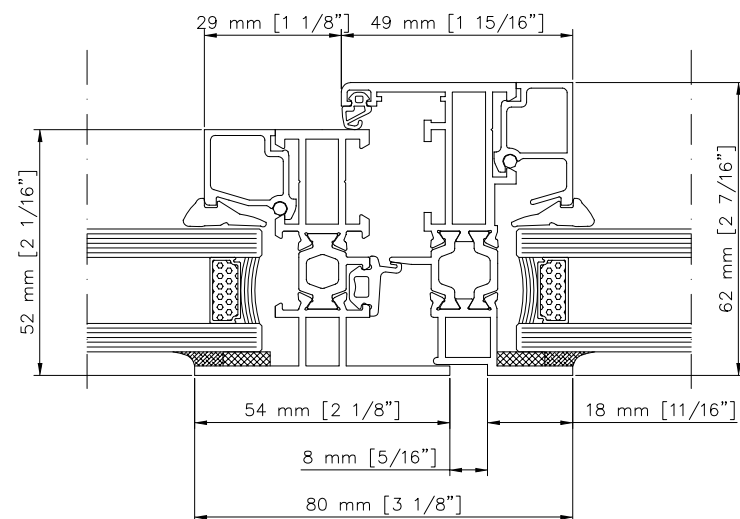
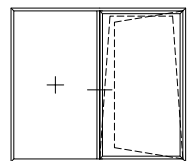
WINDOWS OPEN OUT



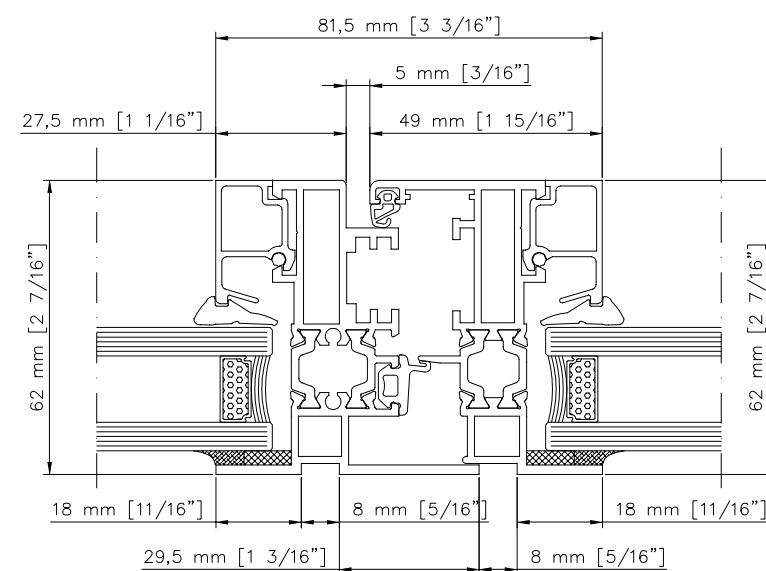
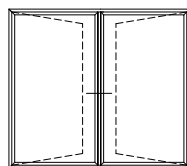
WINDOWS OPEN IN



**WINDOWS
OPEN IN
ON FIXED FRAME**



**WINDOWS
OPEN IN**



ESSENCE ALU

SLIDING SYSTEMS

ESSENCE ALU

Sliding and lift-and-sliding solutions can satisfy technical and aesthetic requirements in the most different architectural styles. These series are reliable, free-flowing, harmonious and rigorously tested. Seamless sleek sections and large glass surfaces provide maximum transparency and maximum light access.

Viewscapes line offers various profiles with different levels of insulation and safety. Movement can be manual or completely automated for maximum comfort.

ESSENCE ALU

VS60 sliding windows and doors

COLD PROFILES

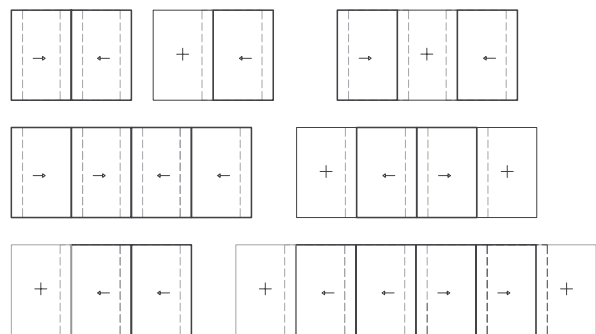


Basic sliding system ideal for a lightweight solution. This sliding windows and doors system is used in passageways connecting balconies or between rooms, while maintaining minimal profile dimensions.

SLIDING WINDOWS AND DOORS

- > Sliding system with cold profile.
- > Lightweight sash.
- > Sash frame depth of 31 mm.
- > Glazing options from 6 mm up to 20 mm glass thickness.
- > Standard rails: from 2 to 3.

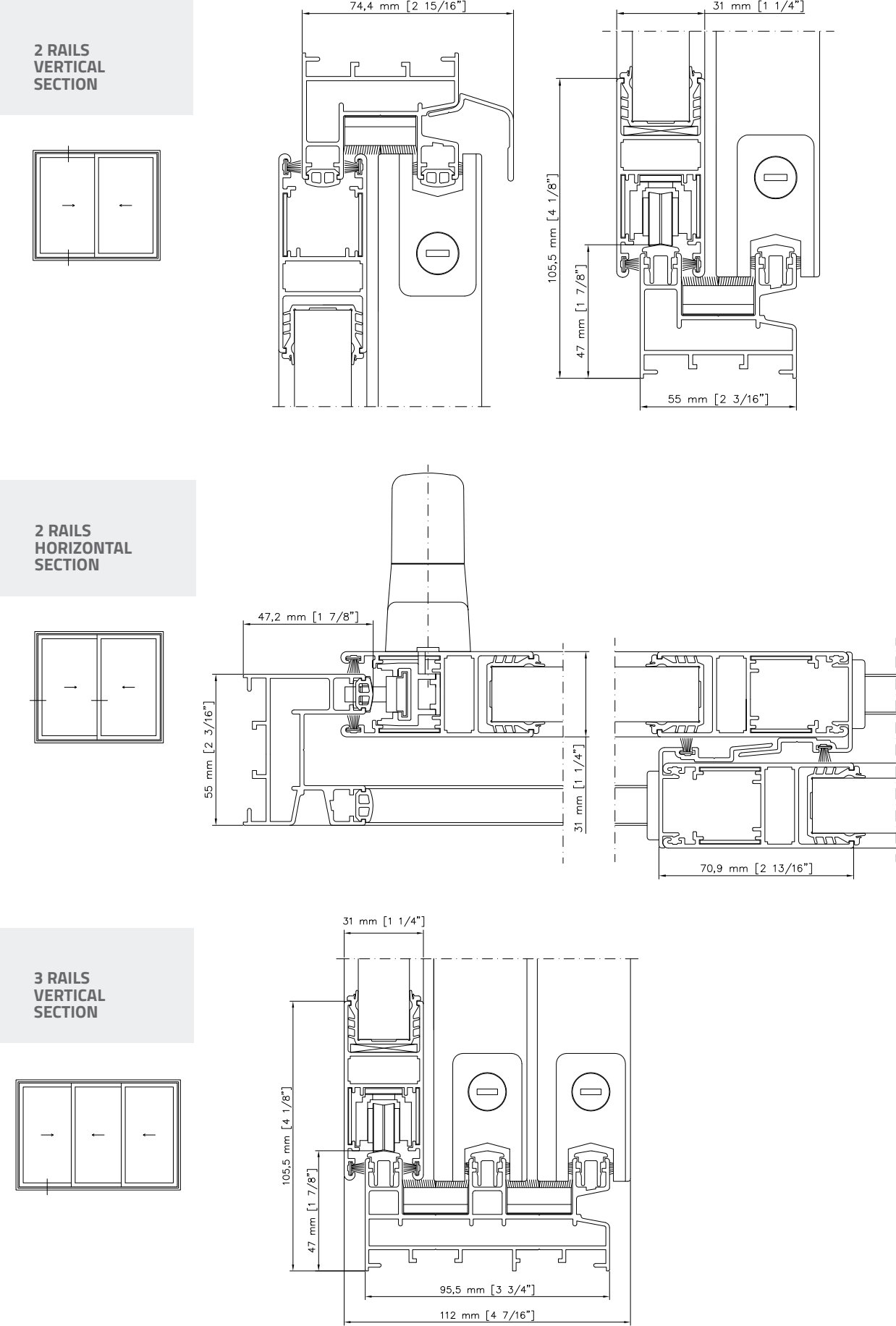
OPENING TYPE



TESTS & REFERENCE STANDARDS

Note: all measurements are made using the SI, the values shown can be approximated due to the conversion

	AIR PERMEABILITY CLASS LC PG 80		WATERPROOFING CLASS LC PG 40
	THERMAL TRANSMITTANCE U=0.541 [BTU/HR FT² °F]		



ESSENCE ALU

VS80 sliding windows and doors

THERMALLY
INSULATED PROFILES

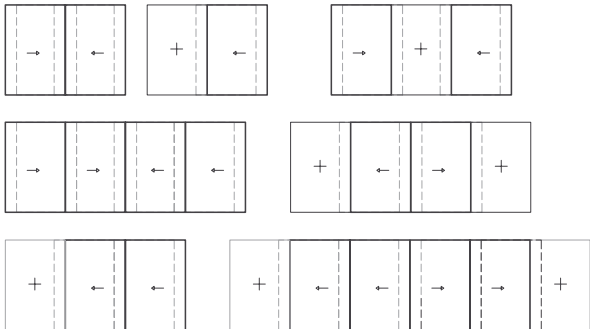


Innovative thermally insulated sliding frame that achieves state-of-the-art performance results. This series combines demand for maximizing light-emitting surfaces with limited dimension frames.

SLIDING WINDOWS AND DOORS

- > Thermally insulated system.
- > Glazing options from 26 mm up to 37 mm glass thickness.
- > Sash and frame visible surface is 105 mm.
- > Capacity for 200 kg door.
- > Standard rails: from 2 to 3.
- > Precautionary internal water collection tank.

OPENING TYPE



TESTS & REFERENCE STANDARDS

Note: all measurements are made using the SI, the values shown can be approximated due to the conversion



AIR PERMEABILITY
CLASS LC PG 80



WATERPROOFING
CLASS LC PG 40



WIND RESISTANCE
CLASS R PG 25

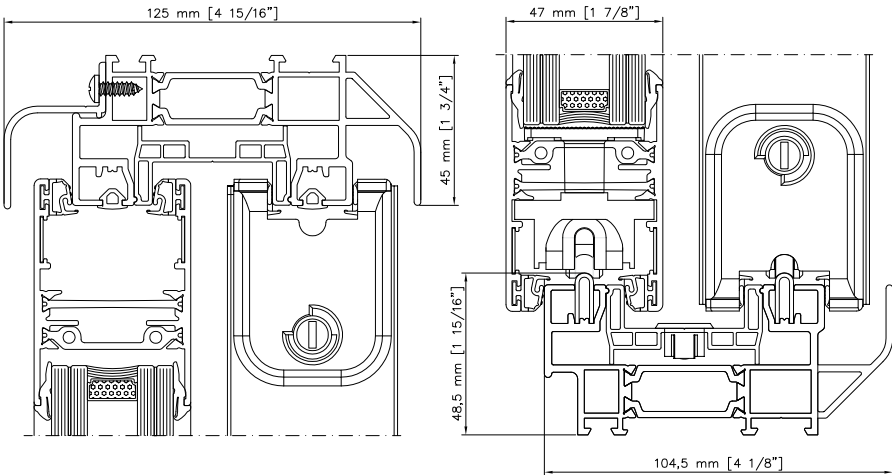
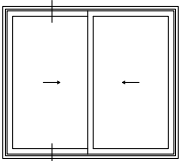


NOISE PERFORMANCE
40 DB

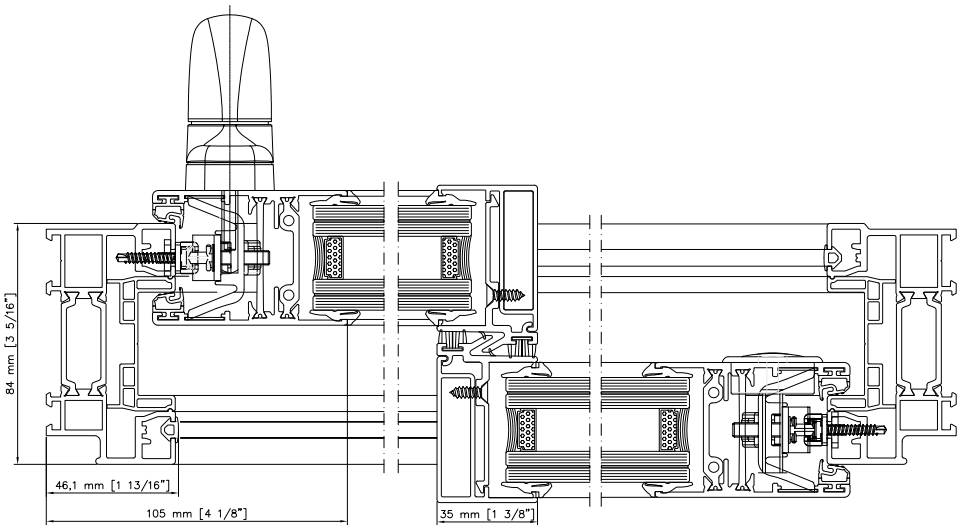
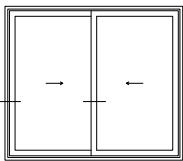


THERMAL TRANSMITTANCE
U=0.394 [BTU/HR FT² °F]

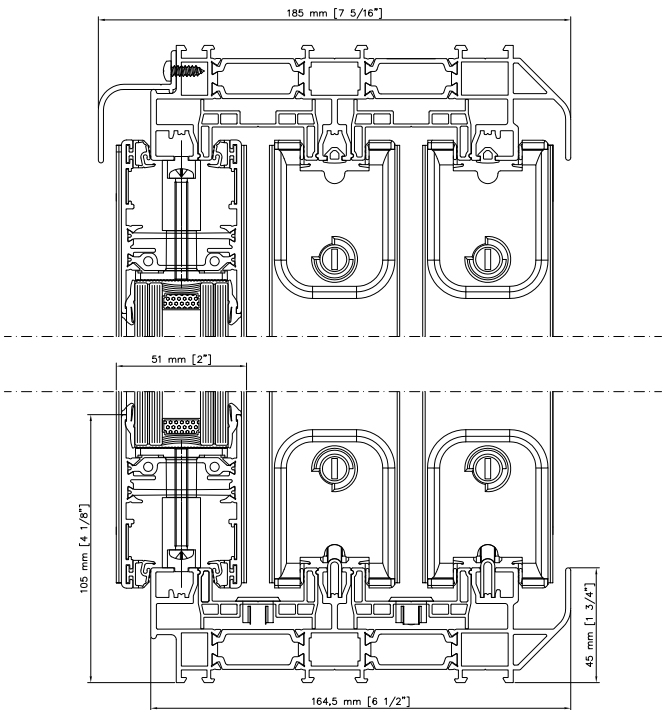
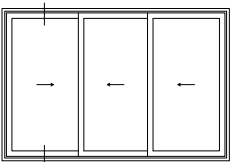
2 RAILS VERTICAL SECTION



2 RAILS HORIZONTAL SECTION



3 RAILS VERTICAL SECTION



ESSENCE ALU

VS120 sliding, lift and slide

THERMALLY INSULATED PROFILES

lowered
flushed threshold



anti-burglary/tampering
hardware



Excellent commitment to technical and aesthetic demands. This window and door frame system allows engineers and architects to achieve extraordinary objectives, with an extremely wide range of applications.

SLIDING WINDOWS AND DOORS

- > Thermally insulated system.
- > Slide or lift-and-slide systems with contained dimensions.
- > Multiple closing options.
- > Low-threshold solution maintaining water tightness and minimizing obstacles impeding access.
- > Sash and frame visible surface is 137 mm.
- > Glazing options from 12 mm up to 36 mm glass thickness.
- > Burglar-proof hardware (for lift-and-slide solution).
- > Capacity for 200 kg to 300 kg door.
- > Standard rails: from 2 to 3.

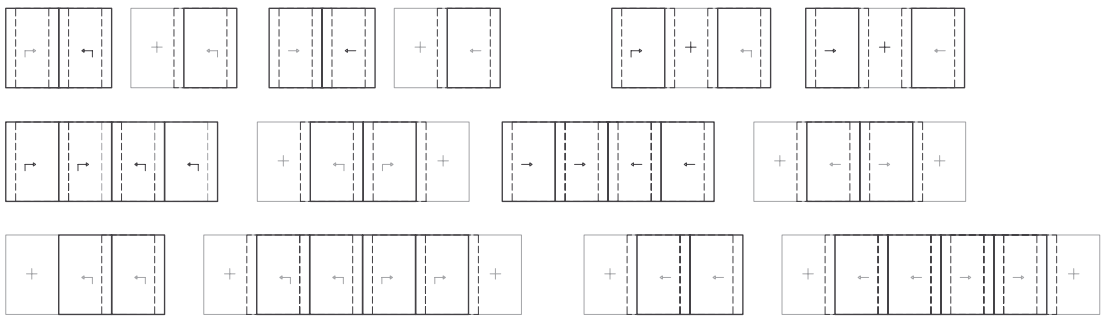
STANDARD SIZING LIMITS:

Up to L 1200 mm x H 2400 mm ** (4' x 8')

**Wind pressure: 10 psf

Max 300kg/sash

OPENING TYPE



TESTS & REFERENCE STANDARDS

Note: all measurements are made using the SI, the values shown can be approximated due to the conversion



AIR PERMEABILITY
CLASS LC PG 80



WATERPROOFING
CLASS LC PG 40

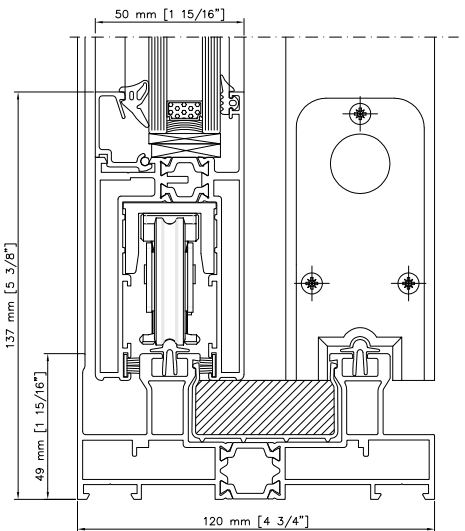
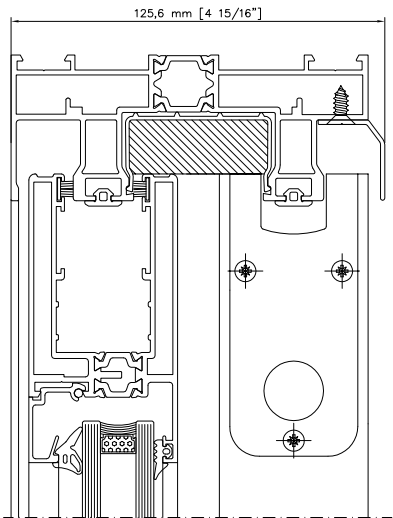
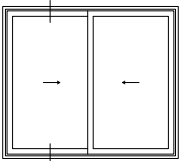


NOISE PERFORMANCE
38 DB

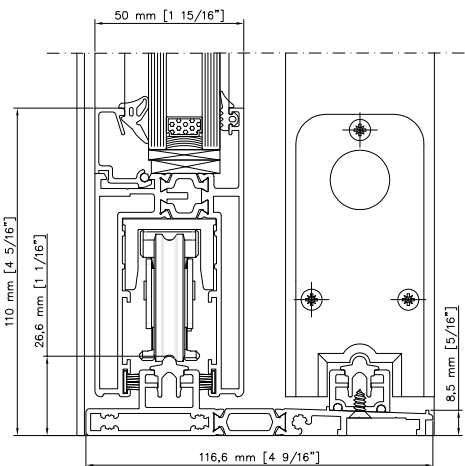
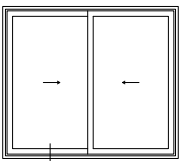


THERMAL TRANSMITTANCE
U=0.489 [BTU/HR FT² °F]

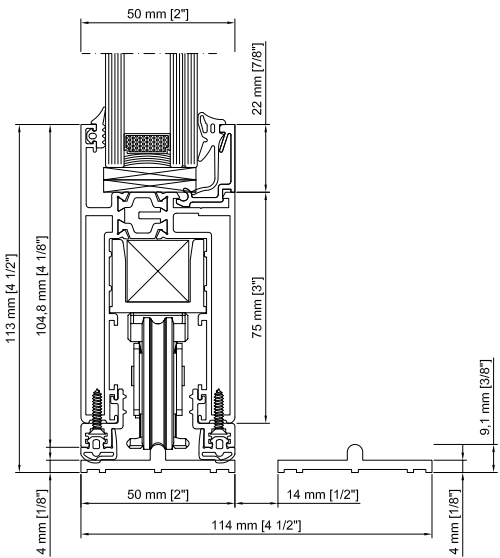
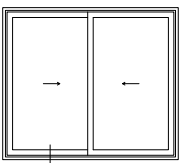
2 RAILS VERTICAL SECTION



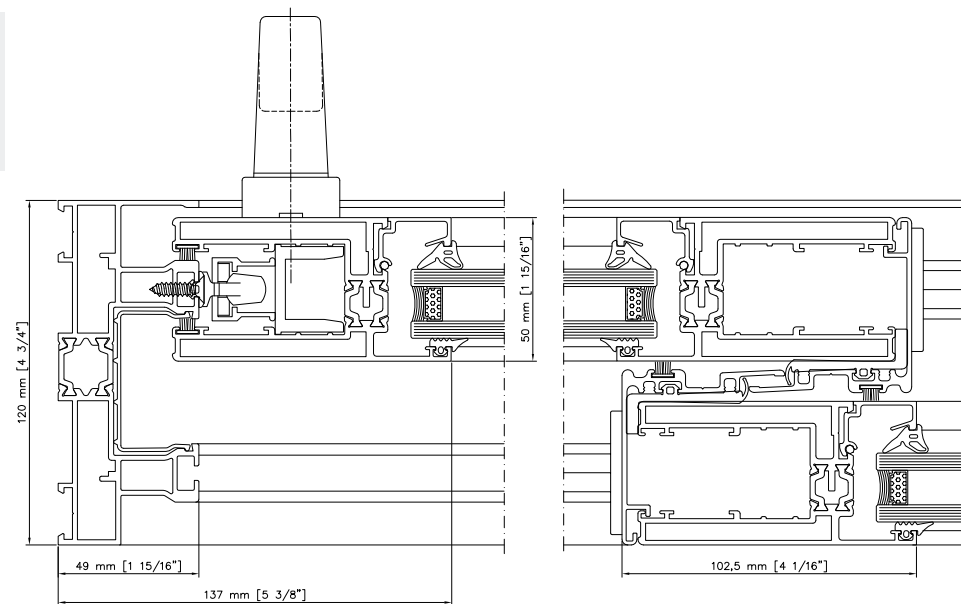
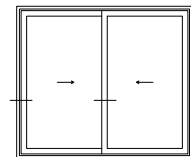
2 RAILS LOWERED THRESHOLD VERTICAL SECTION



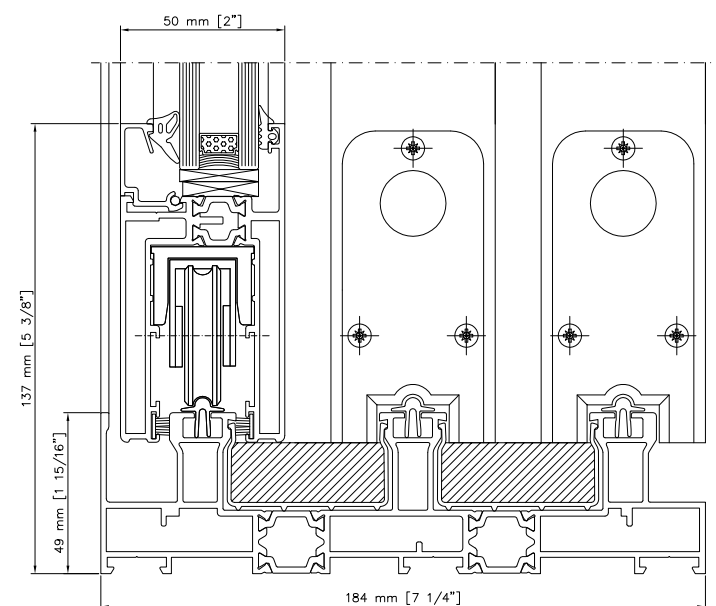
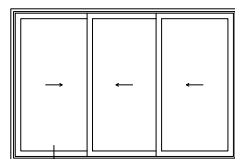
2 RAILS FLUSH THRESHOLD VERTICAL SECTION



2 RAILS HORIZONTAL SECTION



3 RAILS VERTICAL SECTION



ESSENCE ALU

VS170 lift and slide

THERMALLY INSULATED PROFILES

lowered
flushed threshold



anti-burglary/tampering
hardware



Deluxe range series, which is ideal for maximum response to thermal, acoustic and static stress. A key element for achieving a high-energy class, thanks to the possibility of housing more layers of double glazing.

SLIDING WINDOWS AND DOORS

- > Lift and slide system with double thermal break solution.
- > Option for additional thermal and acoustic sponge.
- > Doorway lowered on request for disable access.
- > Fixed frame depth 88 mm (1 rail), 178 mm (2 rail), sash frame depth of 72 mm.
- > Glazing options from 23 mm up to 53 mm glass thickness.
- > Burglar-proof hardware.
- > Smooth operation of doors up to 400 kg.
- > Standard rails: from 1 to 2.

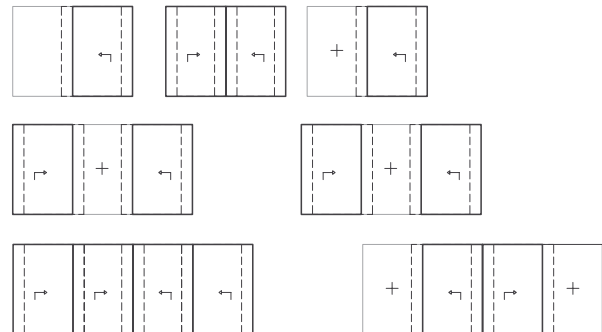
STANDARD SIZING LIMITS:

Up to L 1500 mm x H 3000 mm* (5' x 10')

*Wind pressure: 20 psf

Max 400kg/sash

OPENING TYPE



TESTS & REFERENCE STANDARDS

Note: all measurements are made using the SI, the values shown can be approximated due to the conversion



AIR PERMEABILITY
CLASS LC PG 80



WATERPROOFING
CLASS LC PG 80



WIND RESISTANCE
CLASS R PG 25

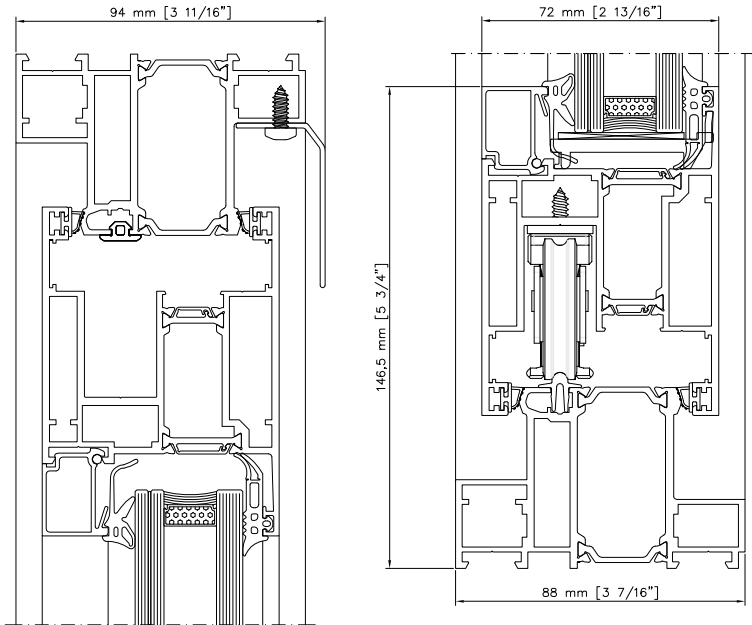
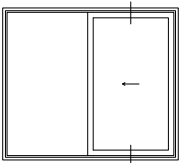


NOISE PERFORMANCE
43 DB

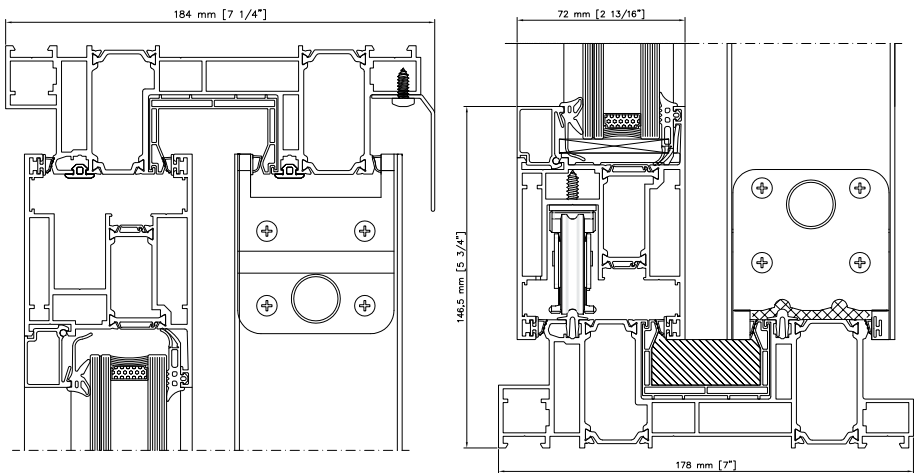
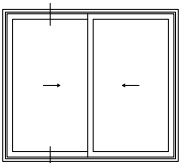


THERMAL TRANSMITTANCE
Double Glazing: U=0.425 [BTU/HR FT² °F]
Triple Glazing: U=0.331 [BTU/HR FT² °F]

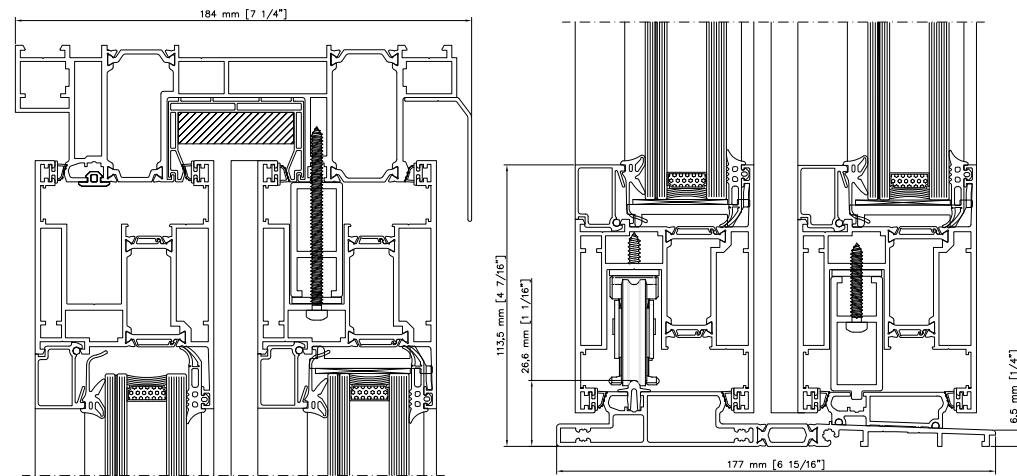
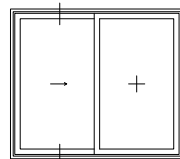
1 RAIL VERTICAL SECTION



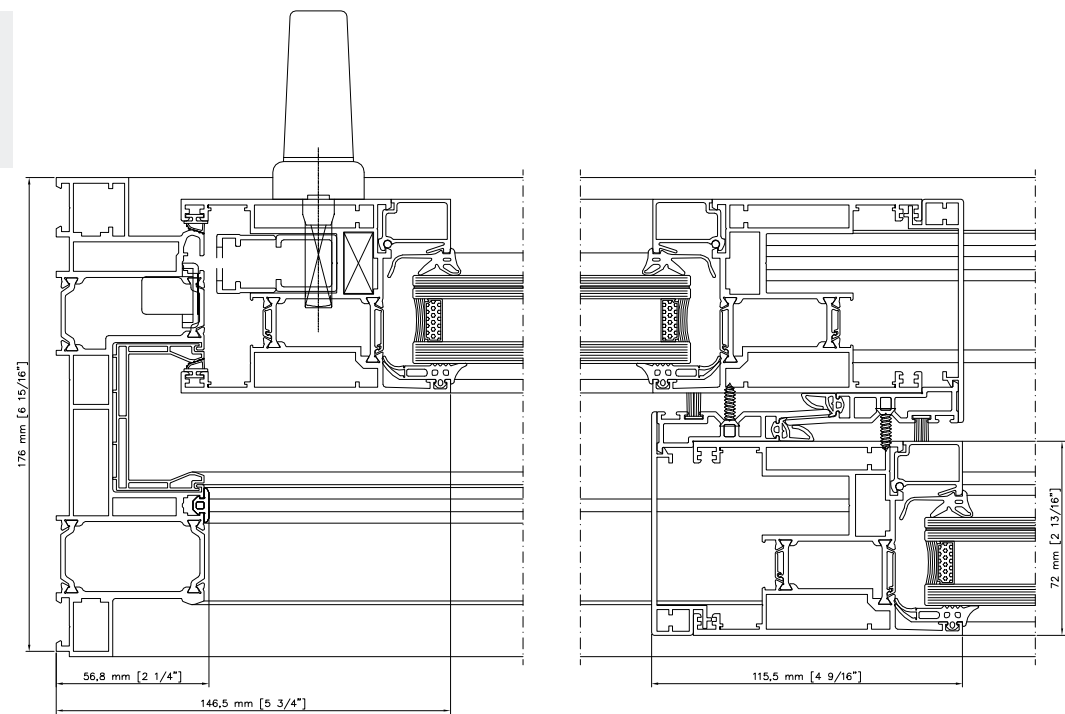
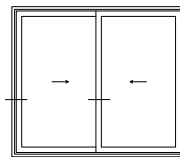
2 RAILS VERTICAL SECTION



2 RAILS
LOWERED
THRESHOLD
VERTICAL SECTION



2 RAILS
HORIZONTAL
SECTION

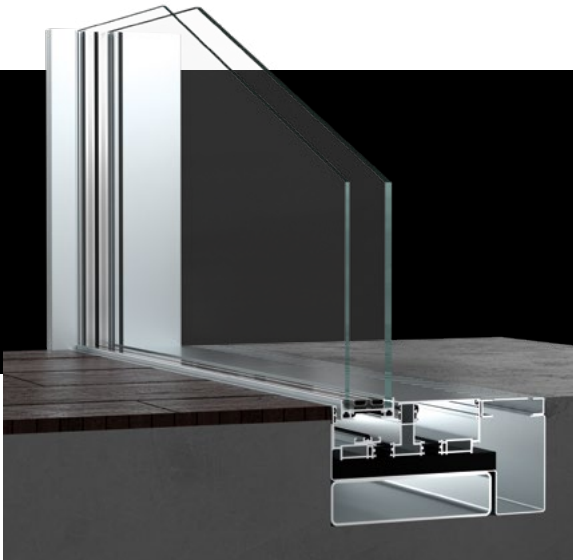


Thermally Insulated Profiles - ESSENCE ALU - VS170

ESSENCE ALU

VS VIEW sliding system

THERMALLY
 INSULATED PROFILES



Innovative sliding window and door frame concept, where aluminum and glass blend in harmony. All glass views play a prominent role in the landscape, minimizing the perception of the internal-external relationship, dematerializing transparent closures to make architecture look more spectacular and modern.

SLIDING WINDOWS AND DOORS

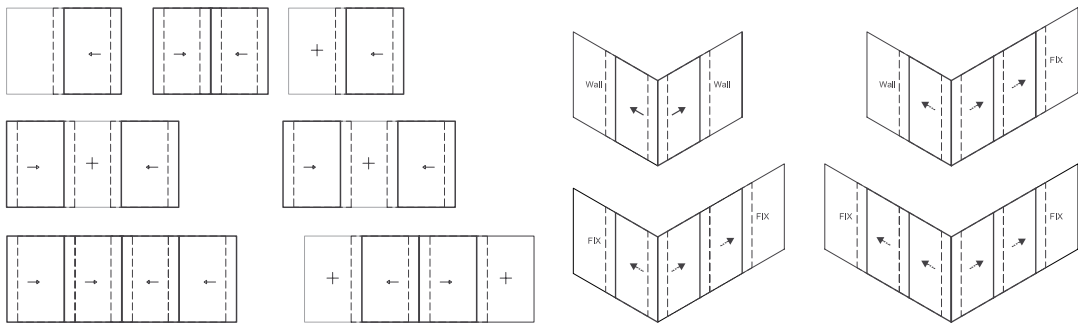
- > Thermally insulated system.
- > Extra-clear glass and large glass panels with high performance levels.
- > Possibility to create glass angles without fixed mullions.
- > Motors, visible or hidden, activated by pushing a button or by a remote control.
- > Optional linear flush-to-the-floor door.
- > Frame visible surface 0 mm.
- > Steady glazing size 37,5 mm (double glazing) or 54 mm (triple glazing) glass thickness.
- > Capacity for 500 kg door.
- > Maximum sash width 2500 mm and maximum sash height 4000 mm.
- > Standard rails: from 1 to 3.

STANDARD SIZING LIMITS:

Up to L 2300 mm x H 3000 mm* (7'6 x 10')
 Max 500kg/sash

*Wind pressure: 20 psf

OPENING TYPE



TESTS & REFERENCE STANDARDS

Note: all measurements are made using the SI, the values shown can be approximated due to the conversion



AIR PERMEABILITY
 CLASS LC PG 80



WATERPROOFING
 CLASS LC PG 80

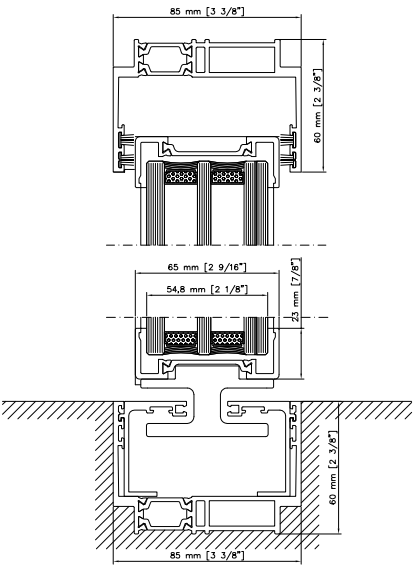
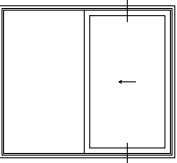


NOISE PERFORMANCE
 42 DB



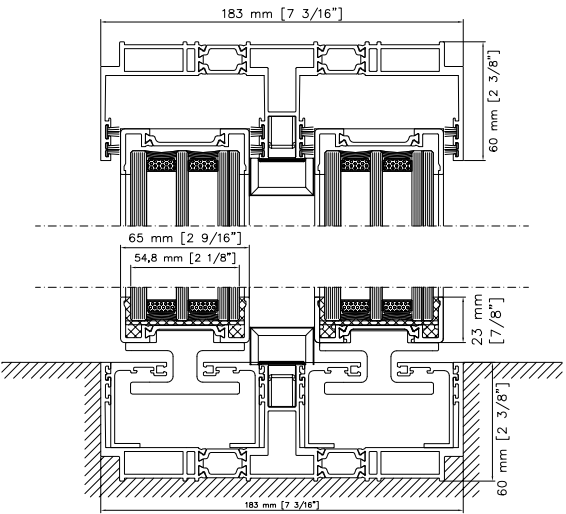
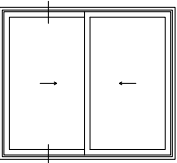
THERMAL TRANSMITTANCE
 TRIPLE GLAZING:
 U=0.267 [BTU/HR FT² °F]

1 RAIL VERTICAL SECTION



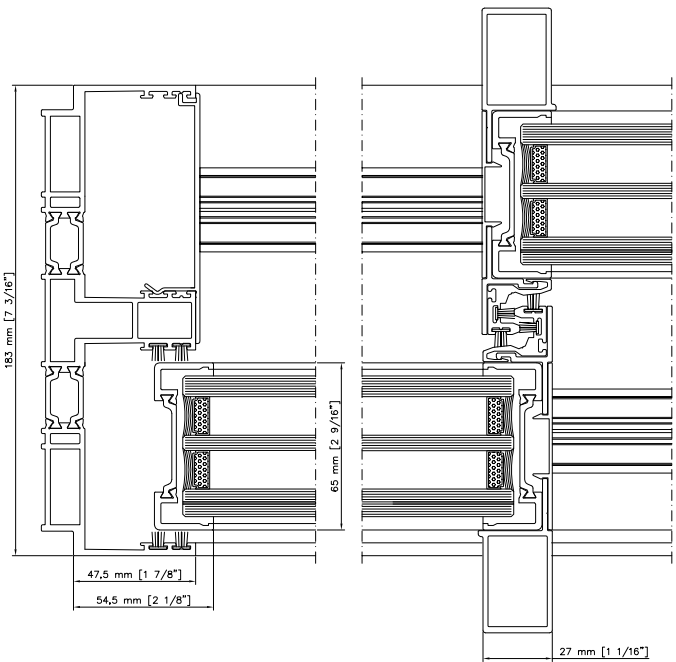
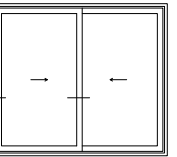
HIDDEN RAIL

2 RAILS VERTICAL SECTION



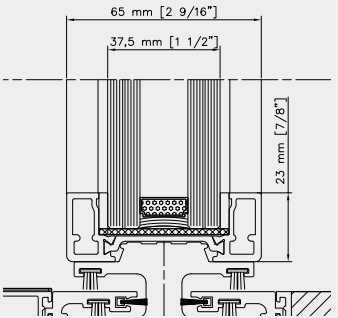
HIDDEN RAIL

2 RAILS HORIZONTAL SECTION

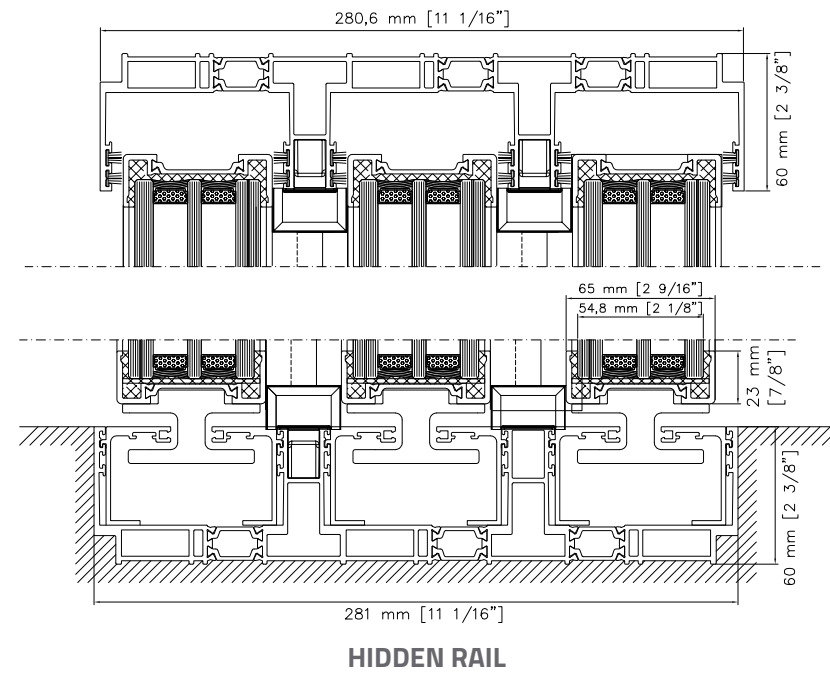
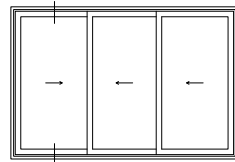


ALL OPTIONS

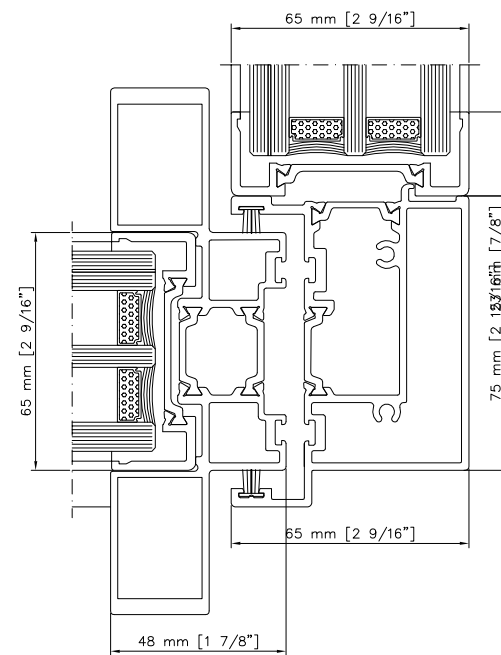
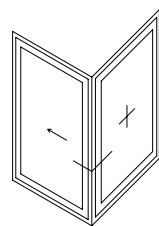
AVAILABLE WITH DOUBLE GLAZING



3 RAILS VERTICAL SECTION



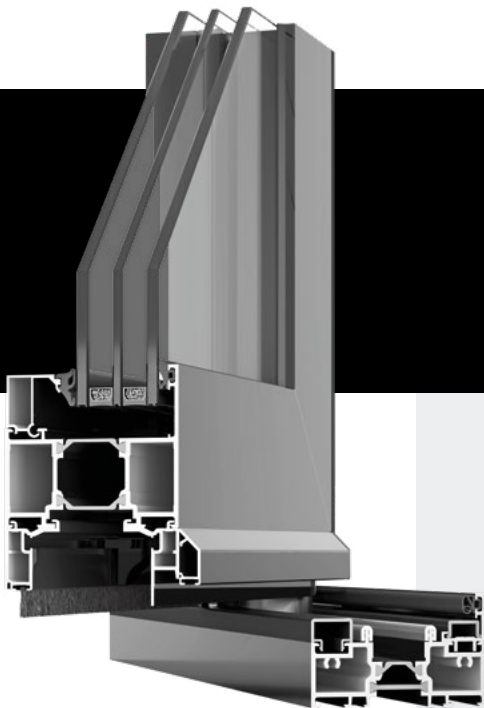
CORNER SECTION



ESSENCE ALU VS BI-FOLD door

THERMALLY
INSULATED PROFILES

anti-burglary/tampering
hardware



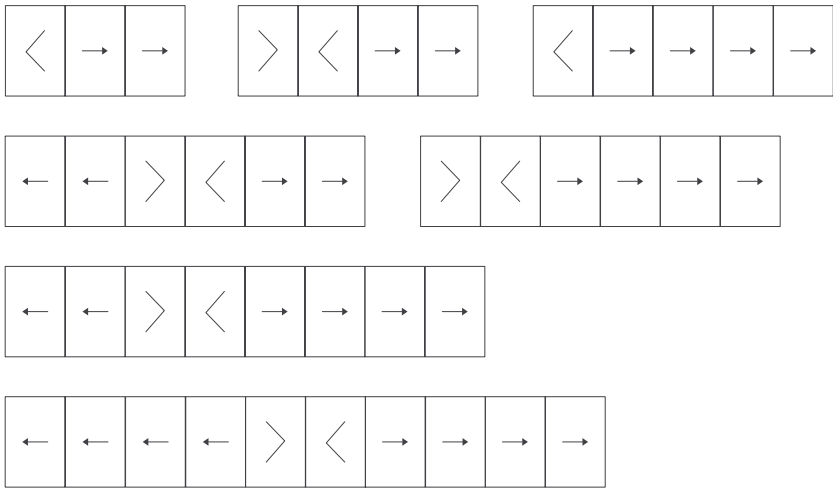
With our Bi-Fold Doors, we turn every season into a wonderful time, allowing the maximum opening thanks to the folding system during hot seasons and granting warmer rooms in cold seasons. A clean contemporary design that maximize glass and light, up to an opening of 10 meters.

BI-FOLD DOORS

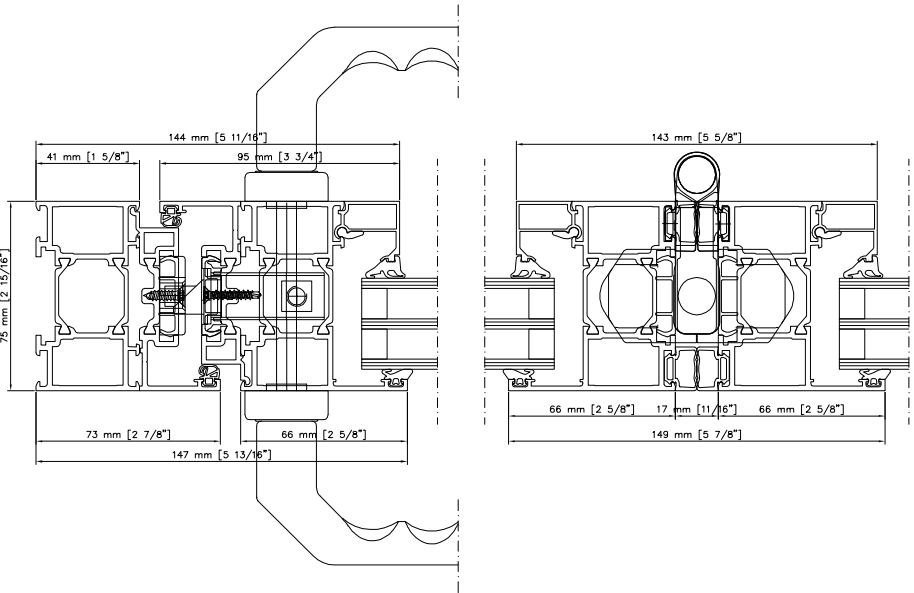
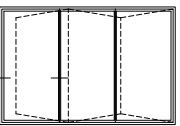
- > Thermally insulated system.
- > Panels can be opened one side or two sides.
- > From 3 to 10 panels.
- > Opening inwards or outwards.
- > Main panel positioned centrally or to one side.
- > Flush threshold for persons with reduced mobility.
- > Three-point locking, with keys.
- > Panel max. size: L 1200 mm x H 3000 mm.
- > Weight of one panel up to 150 kg.
- > Glass thickness from 6 mm to 60 mm.

OPENING TYPE

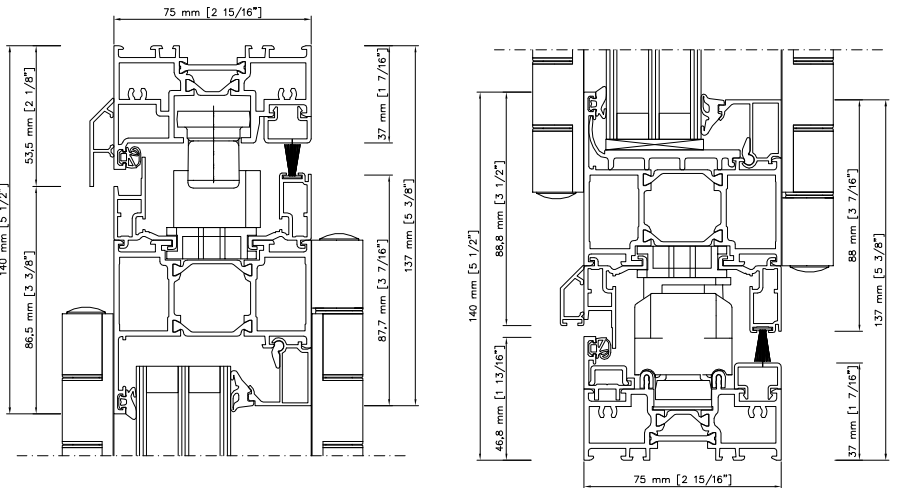
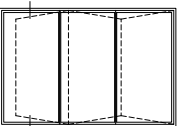
Inward opening
Outward opening



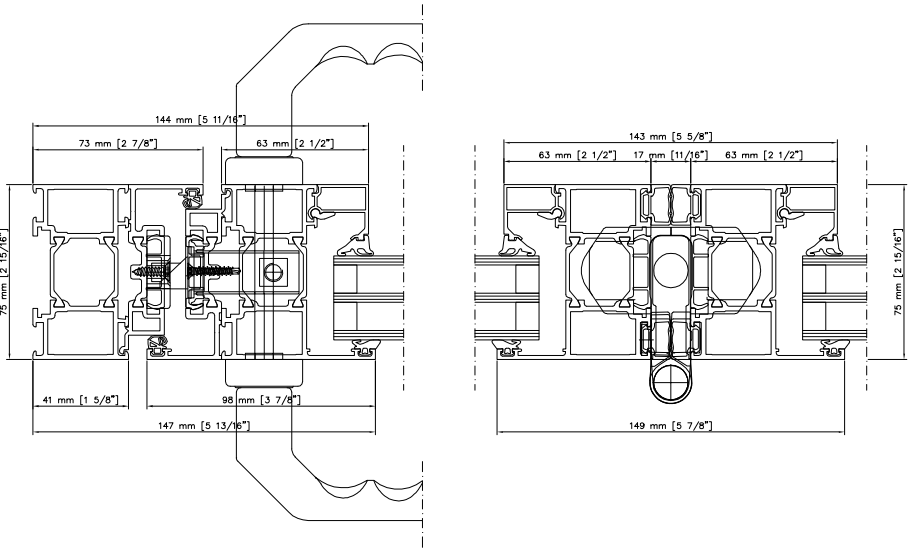
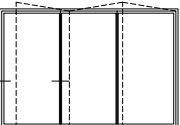
INSWING HORIZONTAL SECTION



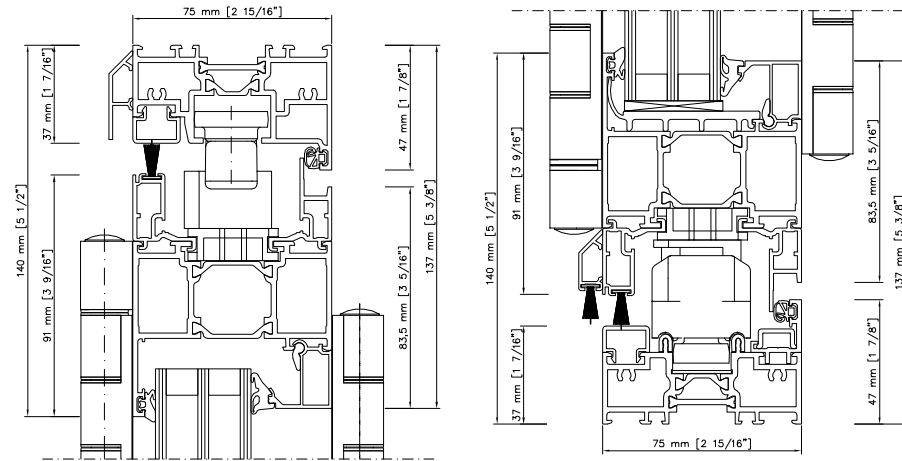
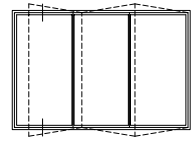
INSWING VERTICAL SECTION



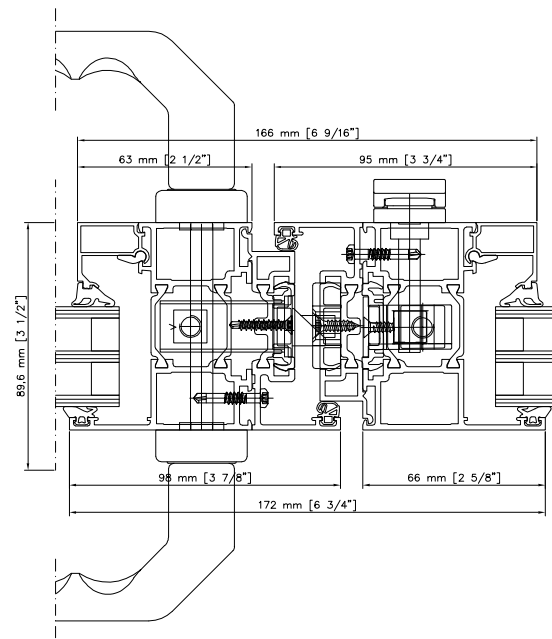
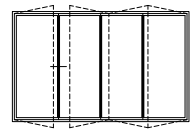
OUTSWING HORIZONTAL SECTION



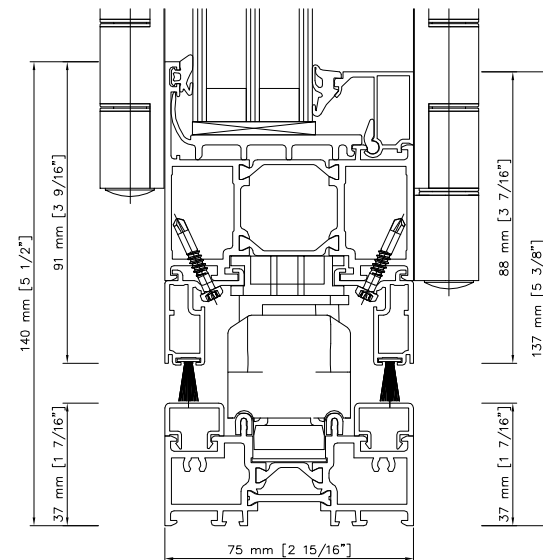
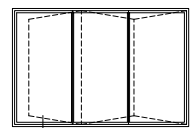
OUTSWING VERTICAL SECTION



DOUBLE DOOR



FLUSH THRESHOLD



ESSENCE ALU

ALUMINUM AND WOOD PROFILES

WINDOWS AND DOORS

Window and door frame no longer just a highly technical component but an important aesthetic solution capable of interacting with the key design element chosen for the environment, bringing complete harmony to the building.

ESSENCE ALU

VS57w windows and doors

COLD PROFILES

anti-burglary/tampering hardware



Base product that combines the technical characteristics of aluminum with the warmth of wood. Ideal solution for indoor spaces or temperate environments.

WINDOWS

- > Certified performance for water, air and wind.
- > Rubber gaskets for water and air sealing.
- > Glazing options from 5 mm up to 24 mm glass thickness.

DOORS

- > Certified performance for water, air and wind.
- > Mechanical fixed aluminum glazing beads for improved security.
- > Internal and external opening.
- > Multipoint security locking hardware.
- > Glazing options from 5 mm up to 24 mm glass thickness.

TESTS & REFERENCE STANDARDS

Note: all measurements are made using the SI, the values shown can be approximated due to the conversion



AIR PERMEABILITY
CLASS LC PG 80



WATERPROOFING
CLASS LC PG 80



WIND RESISTANCE
CLASS R PG 35

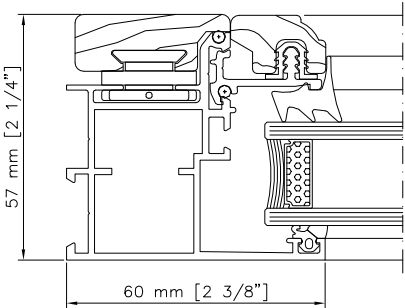


NOISE PERFORMANCE
38 DB

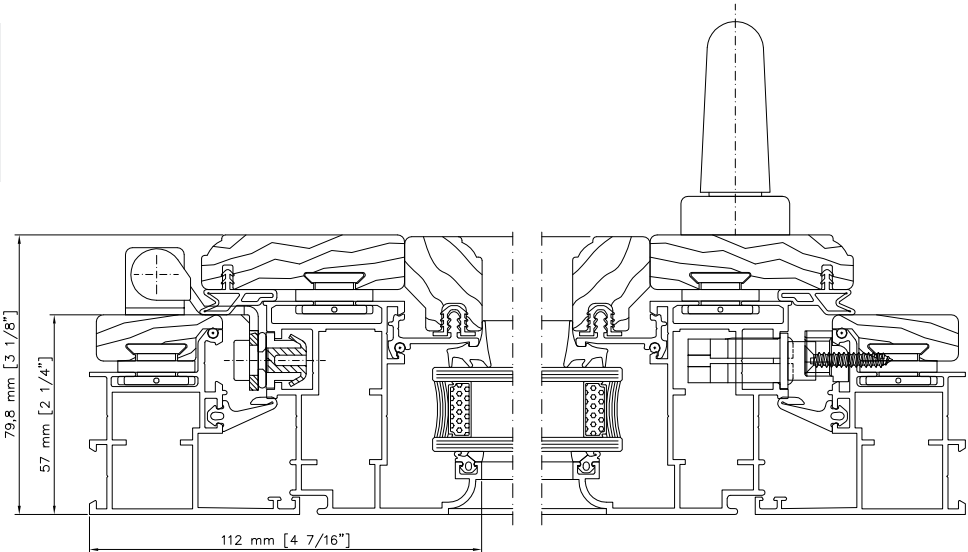
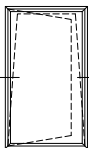


THERMAL TRANSMITTANCE
U=0.395 [BTU/HR FT² °F]

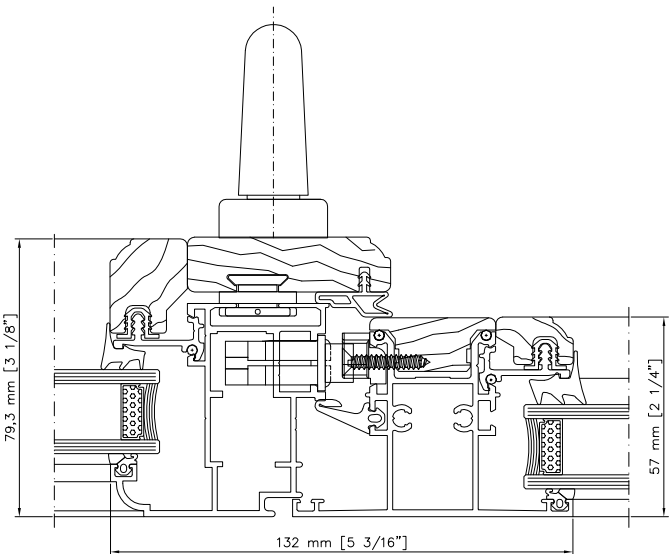
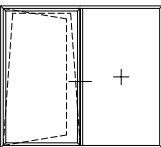
FIXED FRAMES



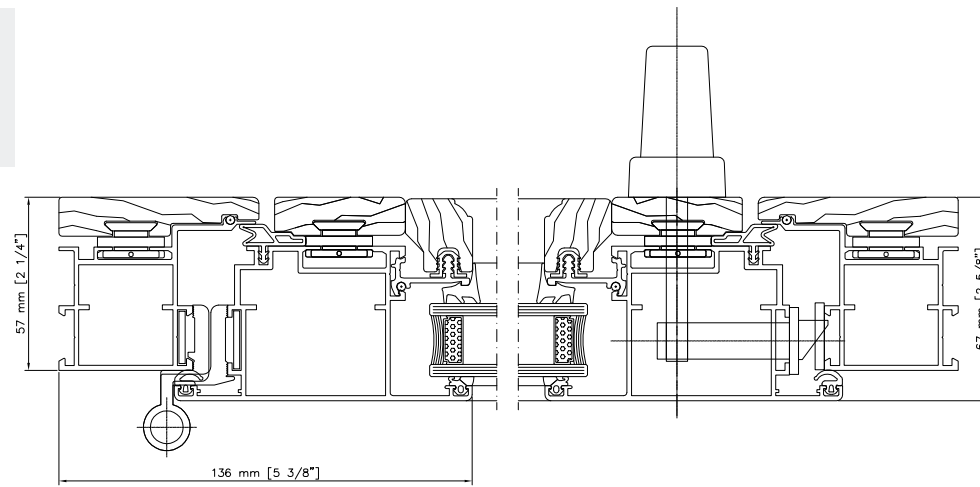
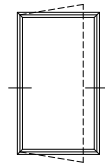
WINDOWS OPEN IN



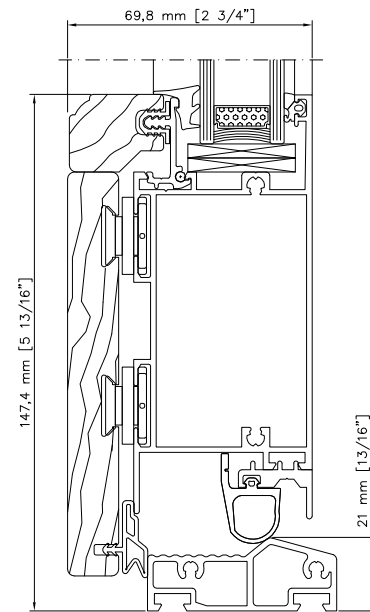
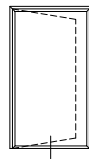
WINDOWS OPEN IN ON FIXED FRAME



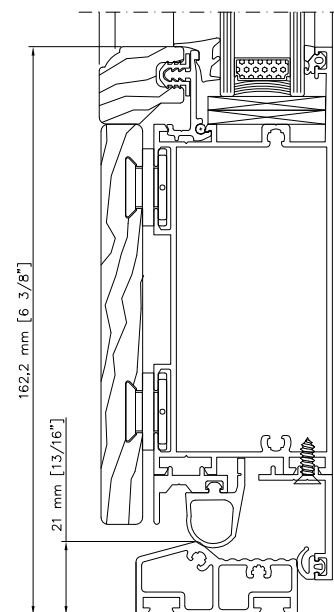
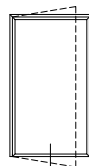
WINDOWS
OPEN OUT



DOORS
OPEN IN



DOORS
OPEN OUT





ESSENCE ALU

VS72w windows and doors

THERMALLY INSULATED PROFILES

- lowered
flushed threshold


- security multiple
locking hardware



High performance solution combined with the elegance of wood, to meet the most demanding aesthetic requirements. The reliability of aluminum and the warmth of wood combine in one element.

WINDOWS

- > Ideal for renovations, for its reduced dimension.
- > Thermally insulated aluminum profiles.
- > Rubber gaskets help to improve water, air and wind performance.
- > Option to mount invisible hardware for better aesthetics.
- > Glazing options from 23 mm up to 34 mm glass thickness.

DOORS

- > Certified performance for water, air and wind.
- > Thermally insulated profiles.
- > Mechanical fixed aluminum glazing beads for improved security.
- > Multipoint security locking hardware.
- > Internal and external opening.
- > Glazing options from 22 mm up to 45 mm glass thickness.

TESTS & REFERENCE STANDARDS

Note: all measurements are made using the SI, the values shown can be approximated due to the conversion



AIR PERMEABILITY

CLASS LC PG 80



WATERPROOFING

CLASS LC PG 80



WIND RESISTANCE

CLASS R PG 35



NOISE PERFORMANCE

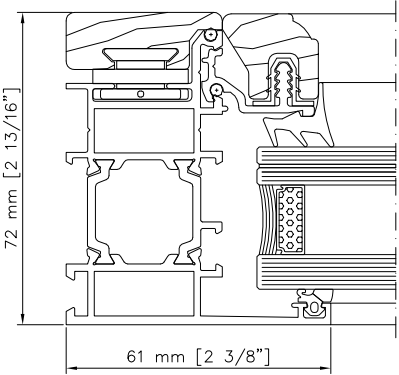
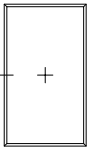
42 DB



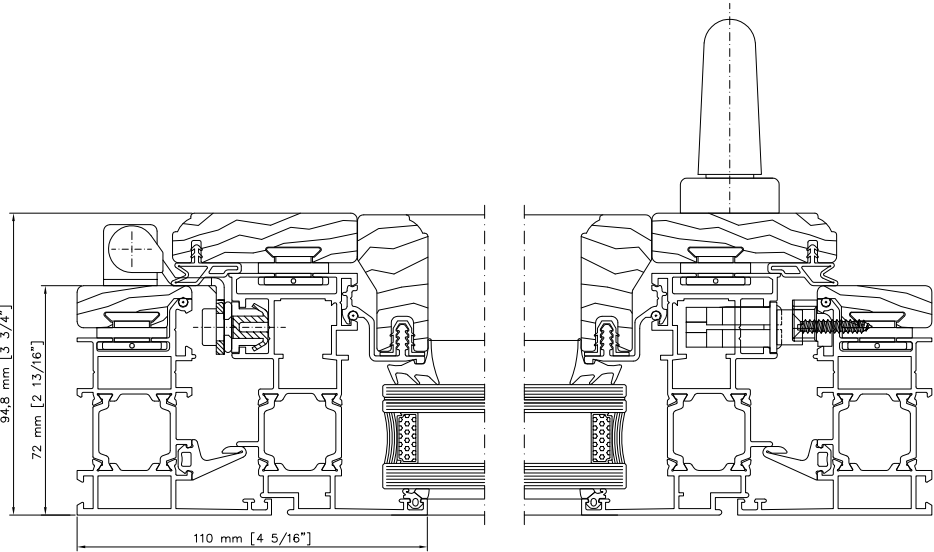
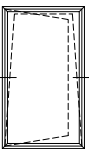
THERMAL TRANSMITTANCE

U=0.310 [BTU/HR FT² ° F]

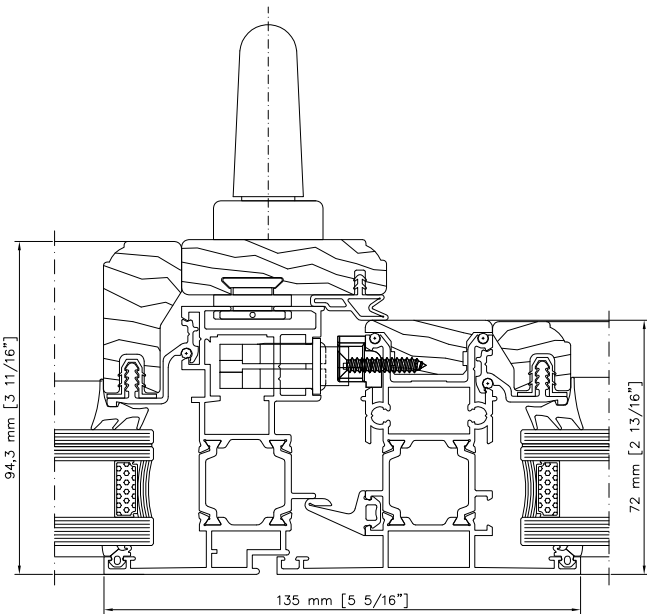
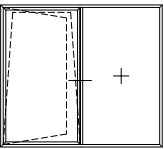
FIXED FRAMES



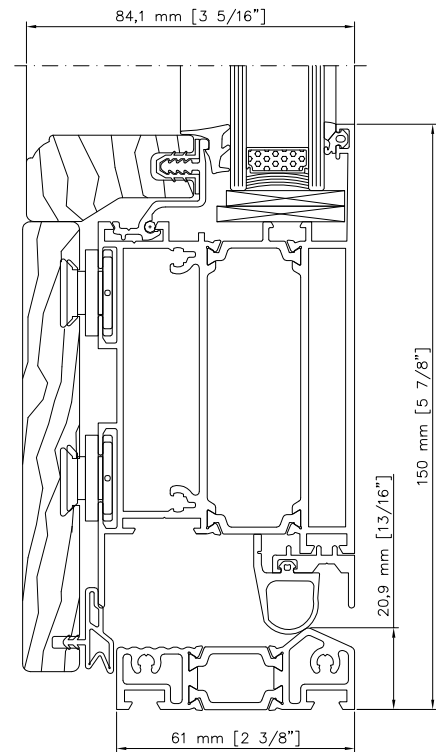
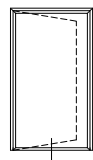
WINDOWS OPEN IN



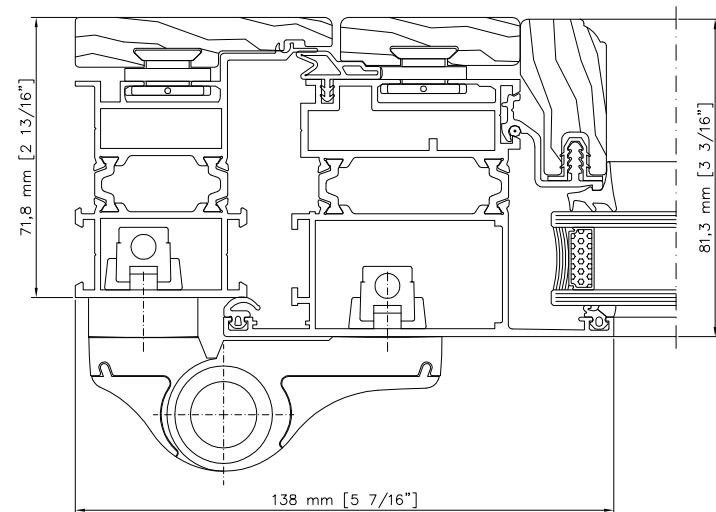
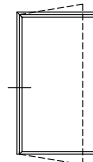
WINDOWS OPEN IN ON FIXED FRAME



DOORS
OPEN IN



DOORS
OPEN OUT



Aluminum and Wood Profiles - ESSENCE ALU - VS72W

ESSENCE ALU

VS115w sliding, lift and slide

COLD PROFILES

security multiple locking hardware

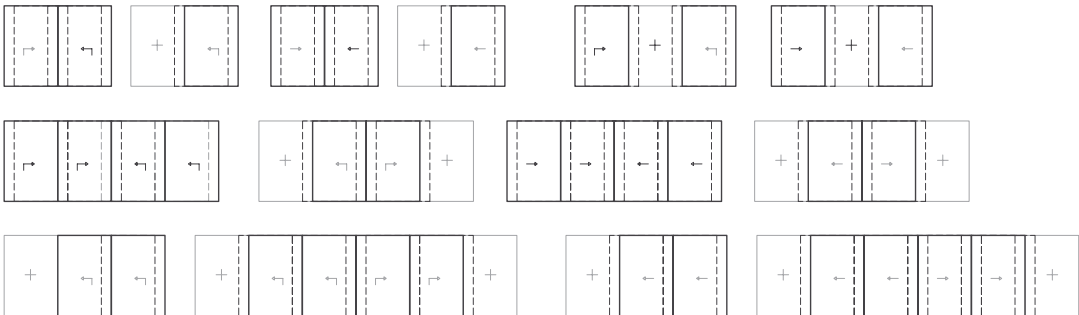


Compact and functional sliding door, that accompanies furniture and wooden items bringing total harmony to your house and building.

SLIDING

- > Certified opening system.
- > Burglar-proof hardware for lift-and-slide version.
- > Aluminum glazing bead with mechanical fixing for improved security.
- > Glazing options from 8 mm up to 28 mm glass thickness.
- > Capacity for 150 kg to 200 kg door.
- > Standard rails: from 2 to 3.

OPENING TYPE



TESTS & REFERENCE STANDARDS

Note: all measurements are made using the SI, the values shown can be approximated due to the conversion



WATERPROOFING
CLASS LC PG 30

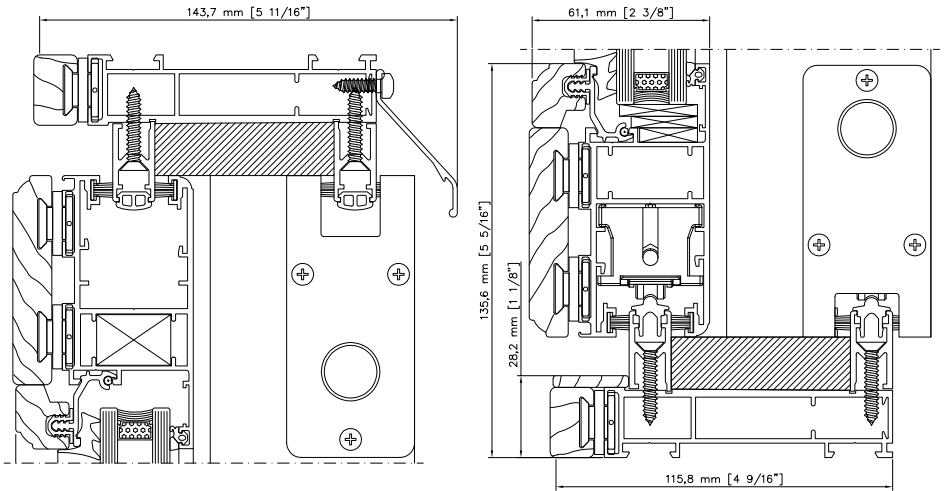
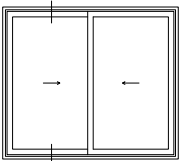


NOISE PERFORMANCE
32 DB

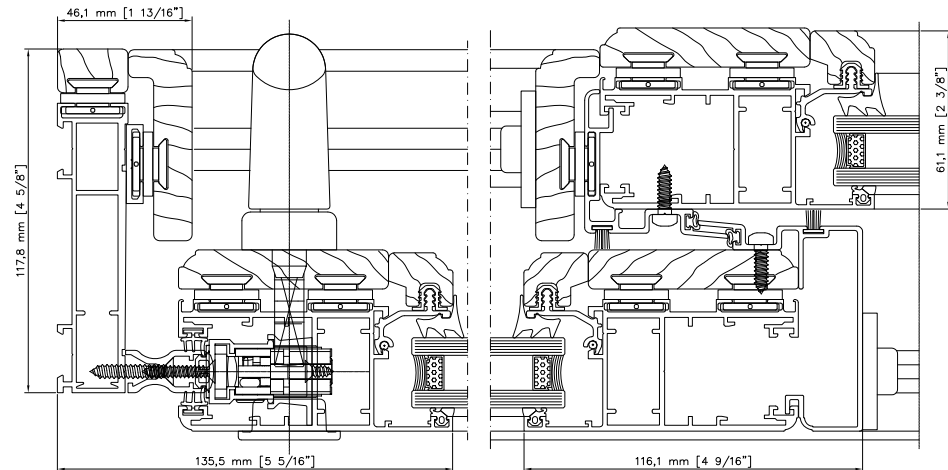
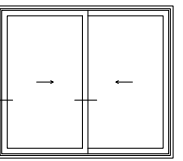


THERMAL TRANSMITTANCE
U=0.508 [BTU/HR FT² °F]

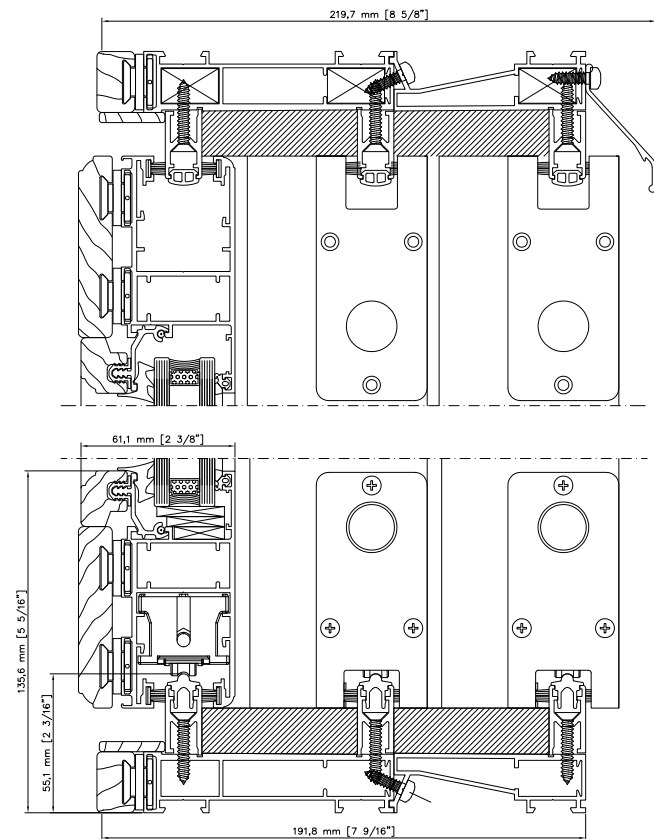
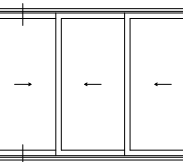
2 RAILS VERTICAL SECTION



2 RAILS HORIZONTAL SECTION



3 RAILS VERTICAL SECTION



ESSENCE ALU

VS160w sliding, lift and slide

THERMALLY INSULATED PROFILES

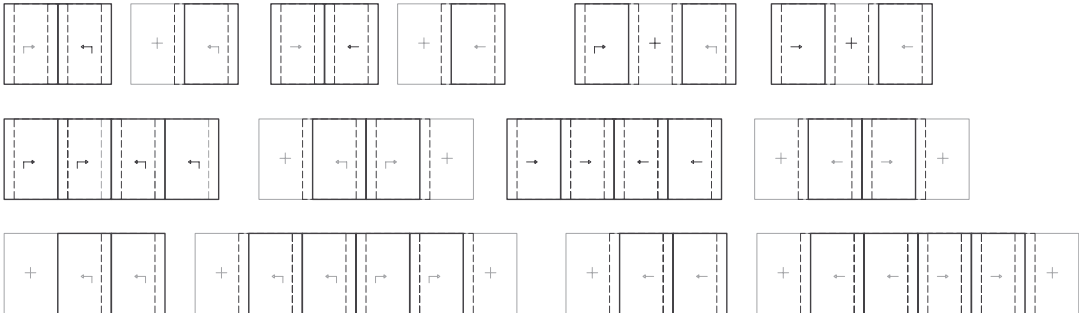
- lowered
flushed threshold
- security multiple
locking hardware

Aluminum and wood sliding or lift-and-slide series. Maximum response to thermal, acoustic and static stress, combined with style and elegance.

SLIDING

- > Certified opening system.
- > Thermally insulated profile.
- > Burglar-proof hardware for lift-and-slide version.
- > Aluminum glazing bead with mechanical fixing for improved security.
- > Glazing options from 20 mm up to 40 mm glass thickness.
- > Capacity for 150 kg to 200 kg door.
- > Standard rails: from 1 to 3.

OPENING TYPE

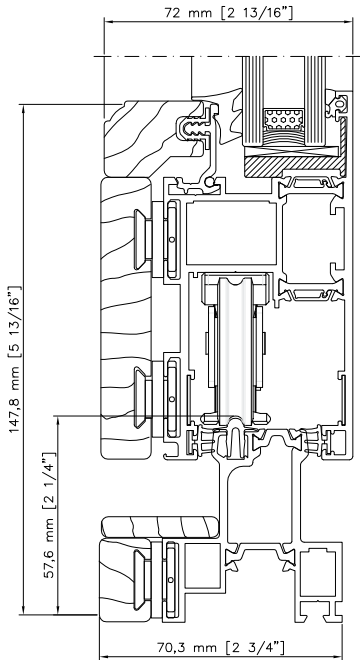
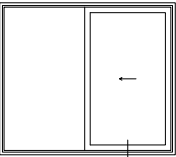


TESTS & REFERENCE STANDARDS

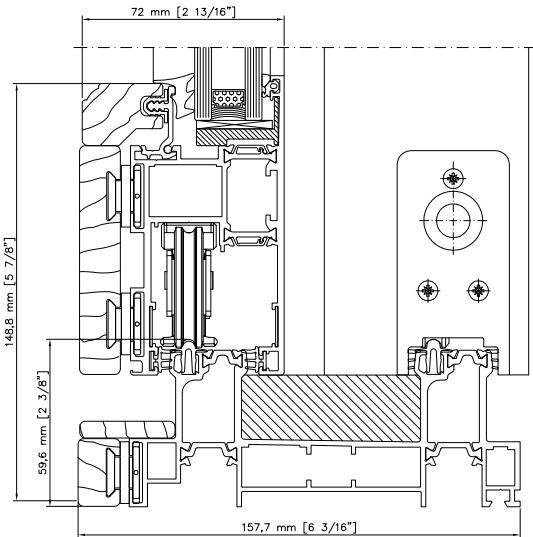
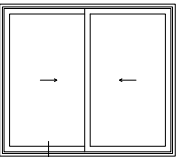
Note: all measurements are made using the SI, the values shown can be approximated due to the conversion

- AIR PERMEABILITY
CLASS LC PG 80
- WATERPROOFING
CLASS LC PG 40
- WIND RESISTANCE
CLASS R PG 35
- NOISE PERFORMANCE
38 DB
- THERMAL TRANSMITTANCE
U=0.391 [BTU/HR FT² °F]

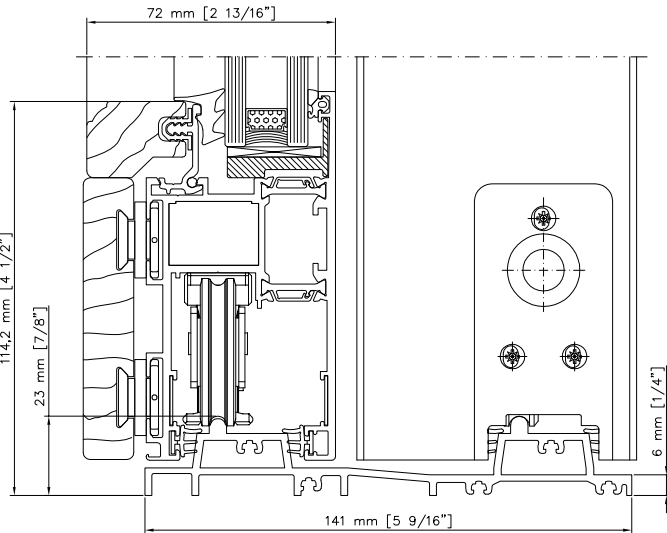
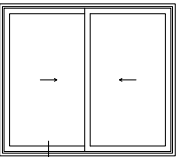
1 RAIL VERTICAL SECTION



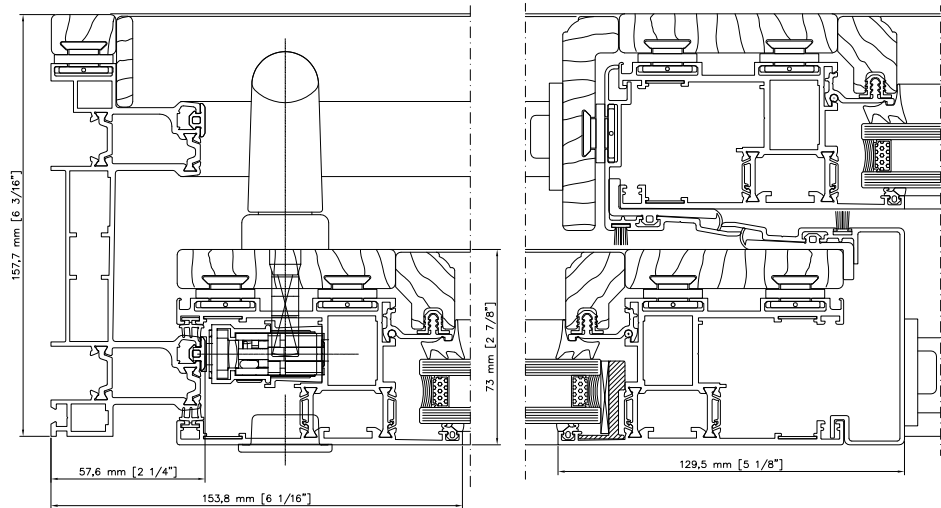
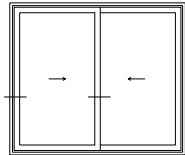
2 RAILS VERTICAL SECTION



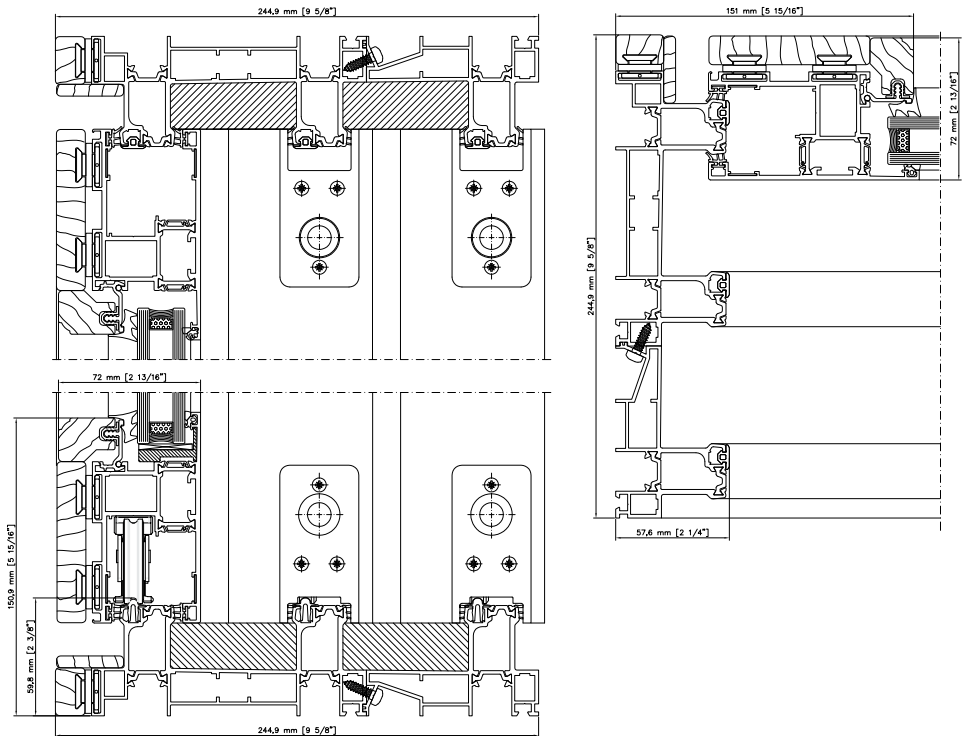
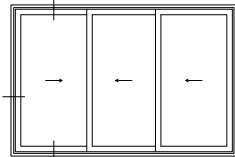
2 RAILS LOWERED THRESHOLD VERTICAL SECTION




2 RAILS
HORIZONTAL
SECTION



3 RAILS



A modern dining room featuring a large glass curtain wall that offers a view of a residential neighborhood with trees and houses. In the foreground, a dark wooden dining table is set with black chairs. A large, white, cylindrical pendant light hangs from the ceiling. To the left, a white modular shelving unit is visible. The floor is made of light-colored wood.

ESSENCE ALU

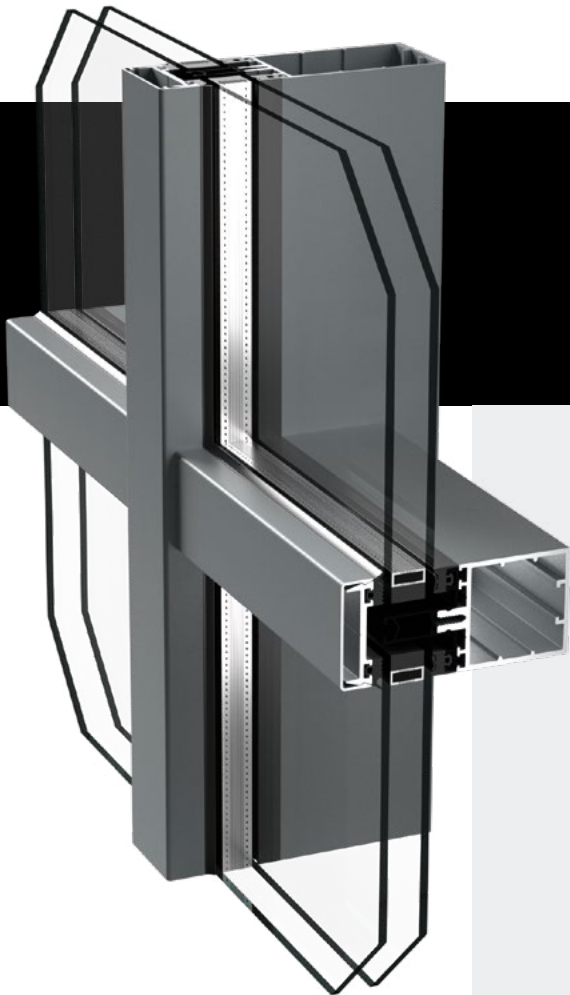
CURTAIN WALL

CURTAIN WALL

This product can be used for creating architecturally unique facades with high-performance values. We can offer custom-made glazing solutions where glass walls are used as solid walls, opening up your living space and allowing the outside in.

ESSENCE ALU VS50FA – FB

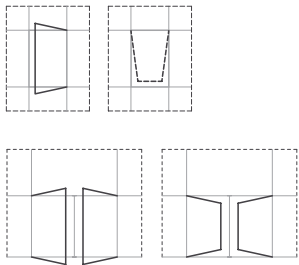
CURTAIN WALL



This universal solution can be used in an extremely wide range of applications, due to its precision and adaptability to architectural requirements.

- > Unlimited solutions of structural frames and external finishes.
- > Mullions for different shaped structures.
- > Option for direct locking to the subframe to minimize the visible aluminum.
- > Visible dimension of transverse mullion is 50 mm.
- > Glazing options from 20 mm up to 50 mm (FA) and up to 56 mm (FB) glass thickness.

OPENING TYPE



TESTS & REFERENCE STANDARDS

Note: all measurements are made using the SI, the values shown can be approximated due to the conversion



AIR PERMEABILITY
TESTED AT 12.5 PSF
0.083 CFM/FT²



WATERPROOFING
TESTED AT 40.73 PSF



WIND RESISTANCE
TESTED AT DP 41.77 PSF

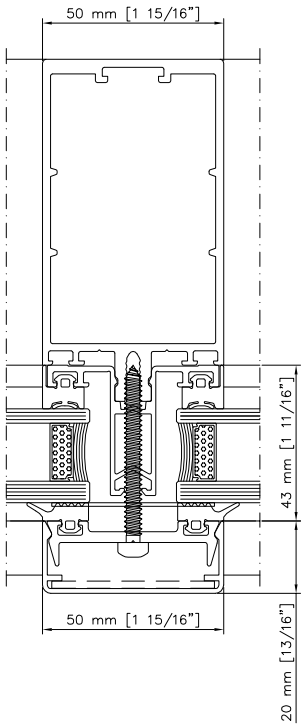
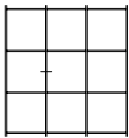


NOISE PERFORMANCE
47 DB

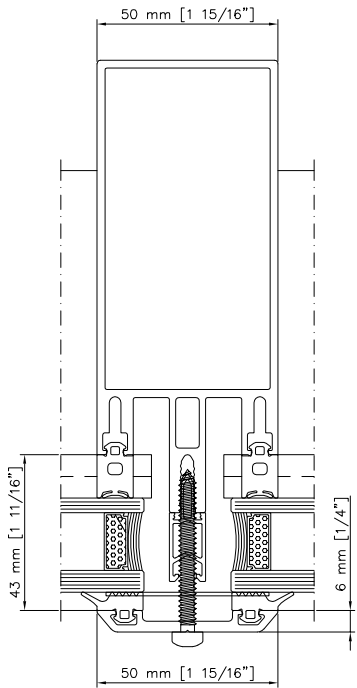
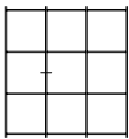


THERMAL TRANSMITTANCE
Double Glazing: U=0.339 [BTU/HR FT² °F]
Triple Glazing: U=0.217 [BTU/HR FT² °F]

HORIZONTAL SECTION

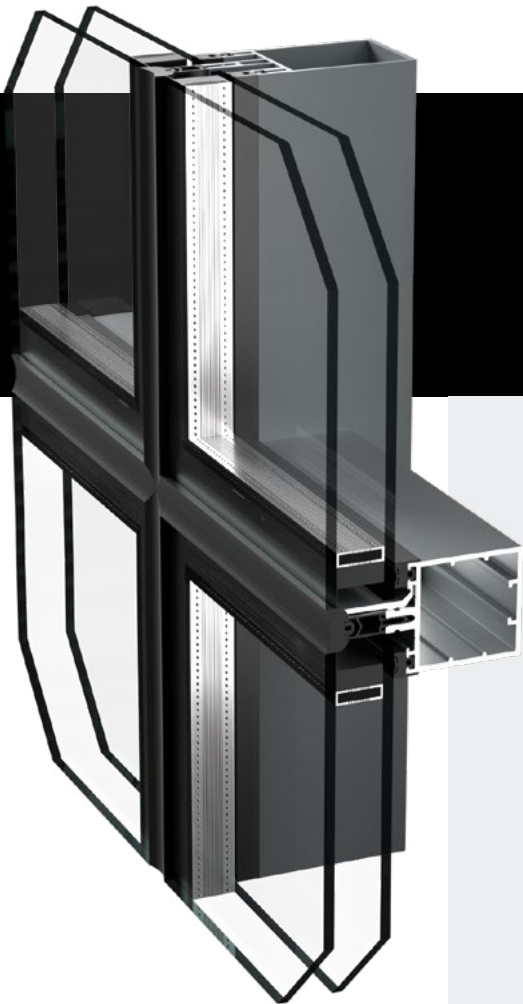


VERTICAL SECTION



ESSENCE ALU VS50FG

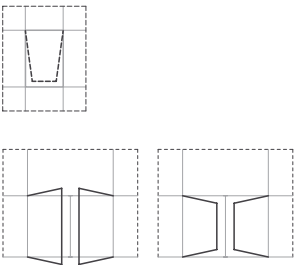
CURTAIN WALL



Expressive freedom and clean line for a contemporary style. Providing a mechanical fixing system and combining functionality with unique results.

- > All-glass structural facade.
- > Possibility of positioning at $\pm 5^\circ$ angles to the facade.
- > Continuous external waterproof sealing for closure.
- > New standard triple glass installation.
- > Glazing options from 28 mm up to 56 mm glass thickness.

OPENING TYPE



TESTS & REFERENCE STANDARDS

Note: all measurements are made using the SI, the values shown can be approximated due to the conversion



AIR PERMEABILITY
TESTED AT 12.5 PSF
0.165 CFM/FT²



WATERPROOFING
TESTED AT 25.06 PSF



WIND RESISTANCE
TESTED AT DP 41.77 PSF

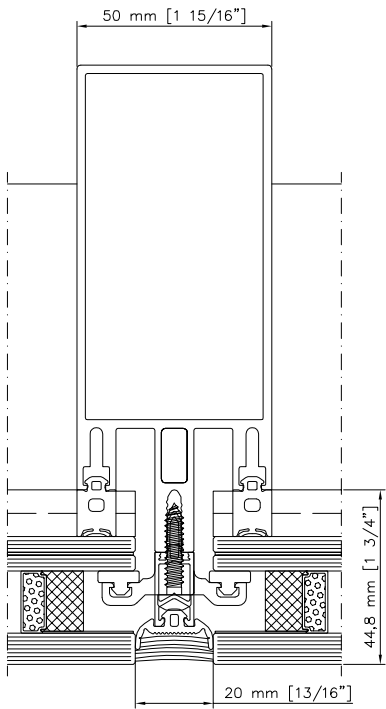
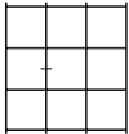


NOISE PERFORMANCE
40 DB

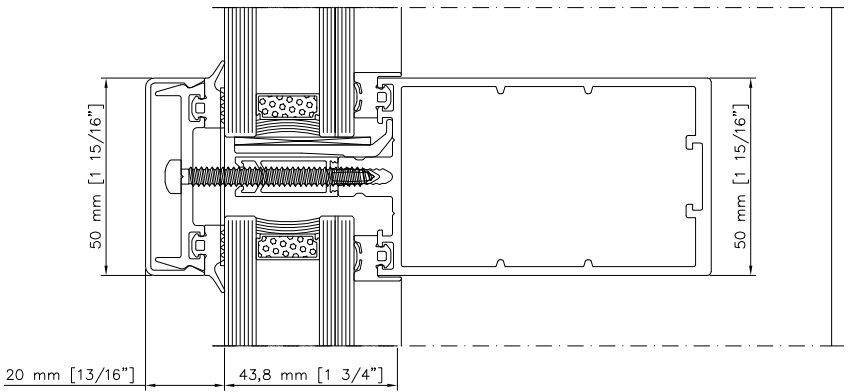
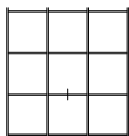


THERMAL TRANSMITTANCE
Double Glazing: U=0.380 [BTU/HR FT² °F]
Triple Glazing: U=0.267 [BTU/HR FT² °F]

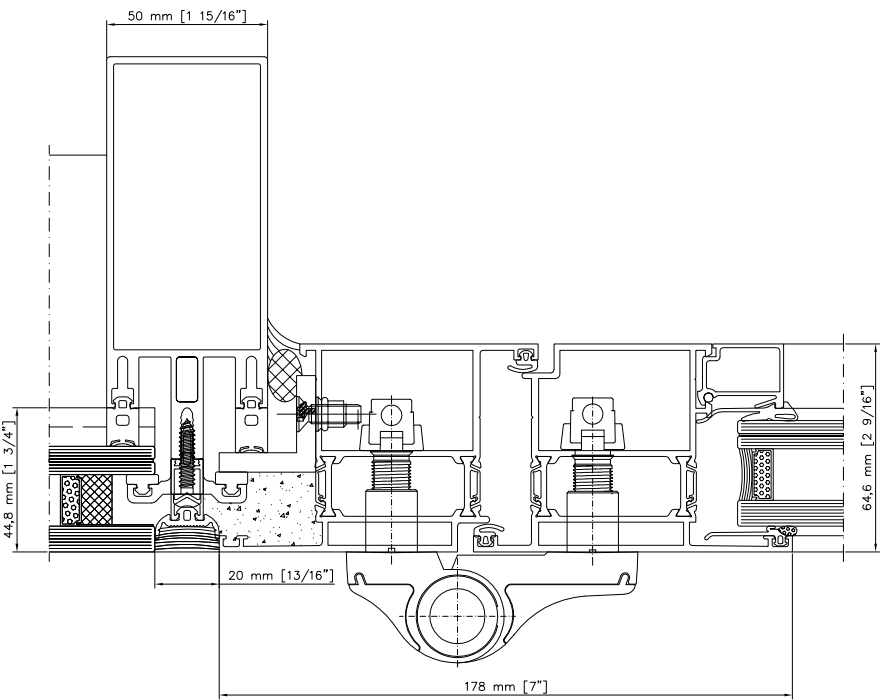
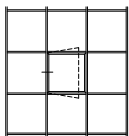
HORIZONTAL SECTION



VERTICAL SECTION



HINGED WINDOW OPEN OUT





ENTRY DOORS

Our Entry Doors line is designed to provide aesthetics and security, using an aluminum structure for stability and low maintenance over time. Customization is our strength: discover all finishes, hardware and design possibilities.





LADDER HANDLES

for doors

ENTRY DOORS



Our hardware selection wants to mix functionality, security and aesthetics, always allowing you to choose from the different finishes.

MODERN
available in:

- stainless steel
- chrome
- matt chrome
- gold



MINIMAL
available in:

- satin stainless steel
- glossy stainless steel



ELITE
available in:

- chrome
- matt chrome
- gold
- matt varnished black
- bronze





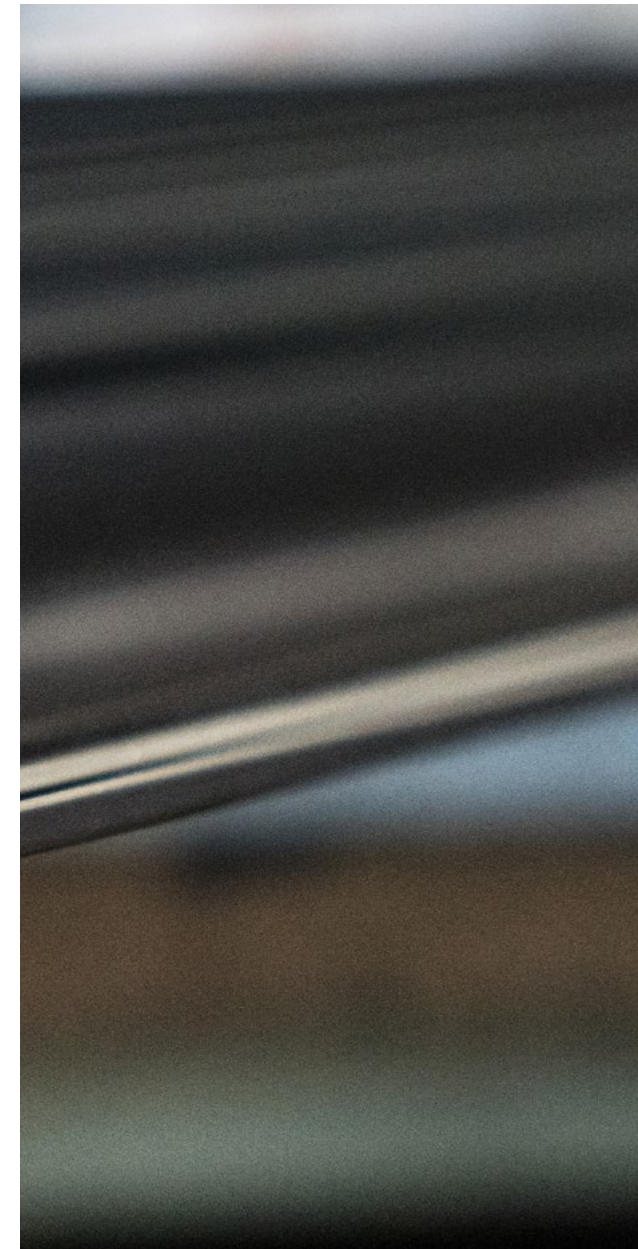
HARDWARE

WE TAILOR YOUR WINDOWS AND DOORS TO FIT PERFECTLY WITH YOUR HOME

Hardware is an expression of form and function: durability, comfort, elegance and aesthetics.

Our long manufacturing experience has allowed us to select high quality hardware, in order to guarantee a life-time duration with very low maintenance.

You can choose from our basic selection, or we can work at finding the best models tailored to your environment and building.





Accessories choice give the opportunity to create your choices and unique Viewscapes windows and doors. Our standard handles selection is studied to mix functionality with modern aesthetic lines and to fit perfectly with your building. Feel free to open your mind and imagination: we will manage to meet your demanding design requests.

HANDLES

for doors, windows and sliding systems

HARDWARE

MODERN
available in:

- silver
- titan
- glossy white
- bronze



DK
HANDLE



LIFT AND SLIDE
HANDLE



DOOR
HANDLE

MINIMAL
available in:

- silver
- titan
- glossy white
- matt black



DK
HANDLE



LIFT AND SLIDE
HANDLE



DOOR
HANDLE

ELITE
available in:

- satin stainless steel
- glossy stainless steel
- matt varnished black
- antique



DK
HANDLE



LIFT AND SLIDE
HANDLE



DOOR
HANDLE



HINGES

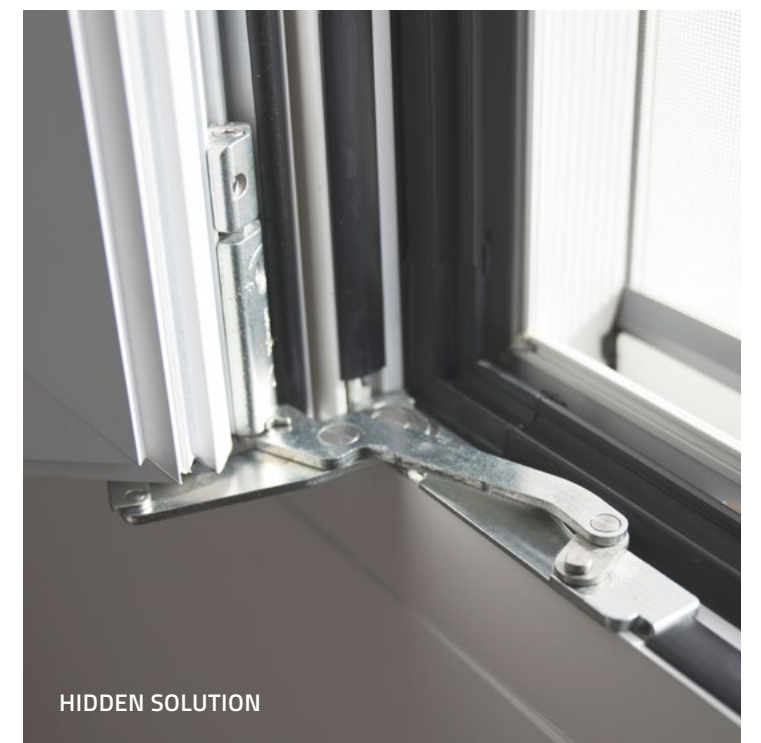
for windows and doors

HARDWARE



For our windows and doors we select heavy-duty adjustable hinges, in order to guarantee a lifetime of responsive operation and to bear the massive weight of heavy sash and door panels.

You can select our standard hinges with different finishes or our hidden solution, which can fit perfectly with modern and essential buildings.



HIDDEN SOLUTION

FINISHES

for windows, doors and sliding systems

Viewscapes profiles can be varnished in a thousand colors: from any RAL color to particular rough finishes. Touch the surface and enjoy a unique, multi-sensory experience. Our paintings are long lasting and resist to sun rays, sudden changes in temperature, scratches and external aggressive agents. Finishes can inspire an incredibly modern aesthetic taste: from matte, textured, to natural and anodized. Option to decide different colors outside and inside.

For particular projects we provide seaside treatment, tested to help painting to resist to particular weather conditions.

In order to provide more durable and high quality finishes, we offer the following selection of colors as standard.



AAMA 2604

Selected painted finishes

DARK BRONZE	ESPRESSO
VERDE RUSTICO	COPPER
MARRONE RUSTICO	CORTEN
SMOKE	GRIGIO RUSTICO

COLORS

COLORS

STONE	BLU RUSTICO
RAL 9005 MAT	RAL 5011 MAT
RAL 7012 MAT	RAL 9006 MAT
RAL 3005 MAT	RAL 9010 MAT
AAMA Class I Selected anodized finish	ARGENTO
BRONZO	ELOX

FINISHES

wooden effects paint

COLORS



Special paint wooden effects combine the strength of aluminum with the warmness of wood, forgetting any maintenance the wood may need.

FINISHES

covers for aluminum and wood profiles

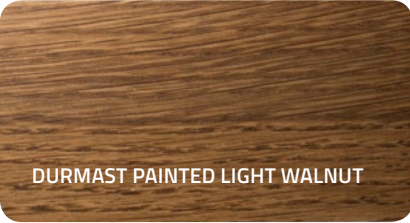
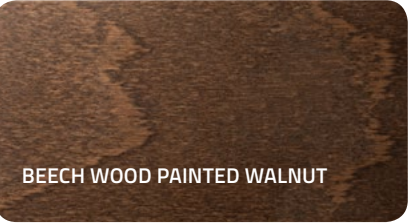
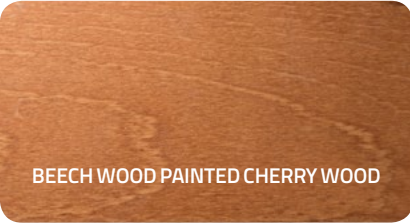
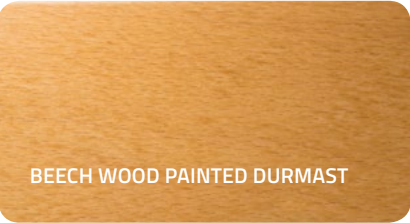
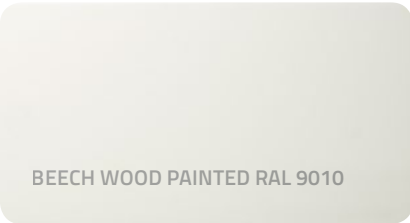
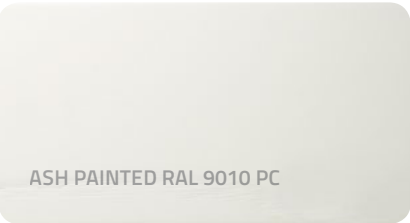
COLORS



In the aluminum and wood profiles you can choose from different inside wooden covers.



The warmth of wood becomes expression of the bond with nature.





SCREENS

ACCESSORIES

for windows, doors and sliding systems



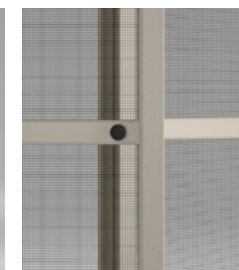
ROLL DOWN

The roll down is a high performance fly screen, hidden when not in use and easy to operate. It can be installed on different frames, both on windows and doors. It can also be adapted to fit irregular frames.



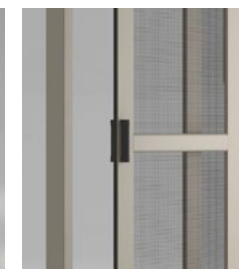
RETRACTABLE

Ultra clean look, with just a box and an upper side rail, no closing profile or ground rail required. Practical to use, as the screen can lock in any position.



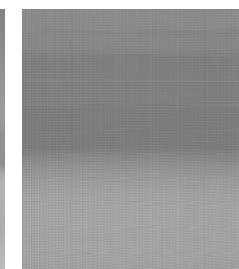
HINGE

The hinged screen offers a traditional solution; ideal for doors thanks to its own aluminum frame without threshold, that allow easy access.



SLIDE

The strong and resistant multi-panel structure is ideal for large door openings. It has no bottom rail for easy access.



FIXED MAGNETIC

Small size frame profile, available in various shapes: square, triangle, trapezoid, circle, and arch. Ideal for openings that do not require openable flyscreen. Magnetic fixing allow easy removal for storage or cleaning.





ViewScapes
aluminum windows and doors

